

GIN Guidelines
International
Network

E-ZINE 3

GIN Conference 2025

16th - 19th September 2025
Geneva, Switzerland



Scottish Charity Number SC034047

GIN 2025 Conference

Welcome to our third edition of the GIN 2025 Conference E-zine.

As we continue to countdown to the much-anticipated GIN 2025 Conference, this edition brings you some updates, reminders and the launch of our Ambassador Brochure.

We look forward to seeing you in Geneva as we work together to drive change through innovation and partnership!

In this month's issue

[Abstract Submission](#)

[Conference Registration](#)

[Key Dates](#)

[Ambassador Opportunities](#)

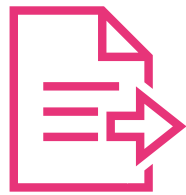
[Accommodation](#)

[Geneva - Travel](#)



Abstract Submission

Showcase your research and share your knowledge and expertise under the main conference theme: “Innovation and Partnerships for Health in All Policies”. Don't miss out on actively participating at GIN 2025 to help advance the continuous learning and development of guidelines at global level, aiming to reduce duplication of effort across the guideline world.



SUBMIT ABSTRACT



**ABSTRACT SUBMISSION
GUIDELINES**

Submission Deadline: 23rd February 2025

Sub-Themes:

- 1. Going beyond Health: Building Partnerships and Strengthening Collaboration for Health In All Policies**
- 2. Harnessing Artificial Intelligence, Technology and Digital Innovations in Guideline Development and Implementation**
- 3. Innovative approaches to develop and scale up guidelines for better Planetary Health**
- 4. Building Trust in Science and Transforming Health Systems through Guidelines**
- 5. A Unified Framework for Health Decision-Making and Informing Research**



Conference Registration

Conference registration opened early to support those who may need to apply for a visa. Should you need a visa to travel to the conference, please note that you can request a visa support letter as part of your registration. Registering early also allows you to take advantage of our Early Bird prices. The Early Bird Deadline is 17th June 2025.

We will be incorporating a Conference App for in-person attendees and a Virtual Conference Platform for online attendees. The App and Virtual Platform are connected which will ensure that we have networking, engagement and knowledge sharing across both audiences.

LMIC/Students/Patients

Online	£400
Early	£400
Standard	£500

GIN Members

Online	£940
Early	£940
Standard	£1,175

Non Members

Online	£1,290
Early	£1,290
Standard	£1,525

REGISTER



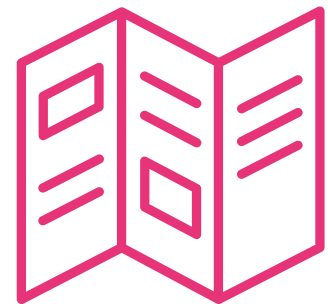
Key Dates

Registration Opens	19th November 2024
Call for Abstracts Opens	2nd December 2024
Abstract Submission Closes	23rd February 2025
Notification of Abstract Acceptance	06th May 2025
Early Bird Registration Closes	17th June 2025
GIN 2025 Conference	16th- 19th September 2025

Ambassador Opportunities

We are excited to announce, that there will be Ambassador Opportunities available for the upcoming GIN 2025 conference!

Please refer to the information in our brochure for more details on how you can get involved, represent the event, and enjoy exclusive benefits.



Accommodation

We are excited to offer rates specifically negotiated for GIN 2025 delegates. Please refer to the terms and conditions for each accommodation provider and please note, that all rooms are sold on a first come, first served basis. All hotels are located just a short distance from the Palexpo International Exhibition and Conference Centre and Geneva Airport. For more information please visit the conference website [here](#).

Crowne Plaza Geneva

For queries or booking, please reach out to the Crowne Plaza directly [here](#).

 25 Min.  5 Min. to Convention Center



ibis budget Genève Palexpo Aéroport

Details on how to book will be included in your registration confirmation.

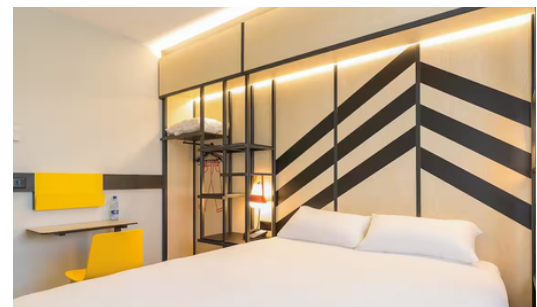
 1 Min. to Convention Center



ibis Styles Genève Palexpo Aéroport

Details on how to book will be included in your registration confirmation.

 1 Min. to Convention Center



Geneva - Travel

Getting to Geneva

Located at the heart of Europe, Geneva is a vibrant international city that's easy to reach from anywhere in the world. With excellent transport connections, including its well-connected airport, efficient rail links, and major highways, traveling to Geneva is simple and convenient.

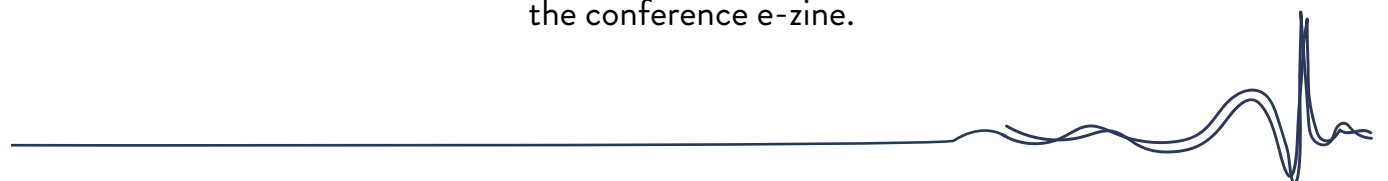


Geneva Airport (GVA) connects to major cities worldwide and is just minutes from the city center. High-speed trains link Geneva to European hubs like Paris, Milan, and Zurich, while excellent road networks make driving a convenient option. Once here, an efficient public transport system ensures easy navigation.

Commitment to Sustainability

At GIN, sustainability is a core value, and we are committed to reducing our environmental impact wherever possible. We kindly encourage all attendees to consider the most sustainable travel options when planning their journey to the conference if at all possible. Opting for trains, buses, or carpooling instead of individual car travel or short-haul flights can make a significant difference.

Keep an eye out for information on **Geneva Attractions** and more in the next issue of the conference e-zine.





Guidelines International Network 2025: Innovations & partnerships for health in all policies

GIN Conference - Geneva
16th - 19th September

Contact Us

We are all extremely excited to be back in 2025 and are looking forward to reconnecting with you all soon!

In the meantime, if you have any questions please contact Vanessa Gruber, our Communications & Conference Project Manager, at comms@g-i-n.net.

For registration and abstract queries, contact gin2025@g-i-n.net



GIN Guidelines
International
Network

