

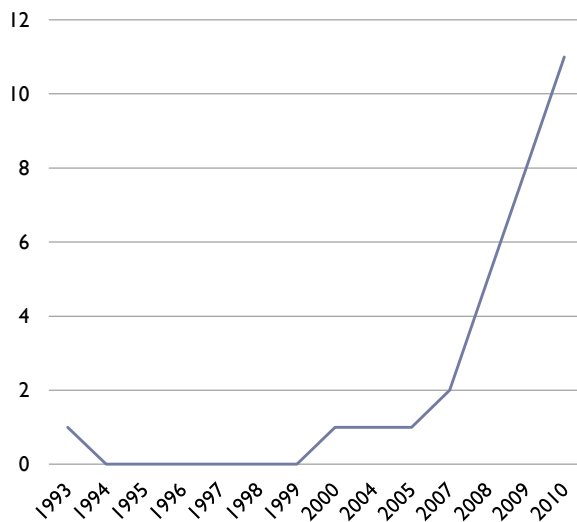
Evidence-based Clinical Practice Guidelines in Korea

YK Lee, SH Lee, ES Shin, YM Jung, JE Jang, YH Park

2011 Aug 31, GIN



Korean CPGs: current status



SD Kim et al. 2009

근거중심의 의료서비스 제공기반 구축을 위한 전문학회 확산시스템 개발.

• CPGs published

about 107 CPGs

• Academic society who have experienced for CPG development

about 30 academic societies

• Financial sources

Academic society itself (46.7%)

External research fund

• Stakeholder involvement:

Limited (usually single academic society)

2011 Aug 31, GIN



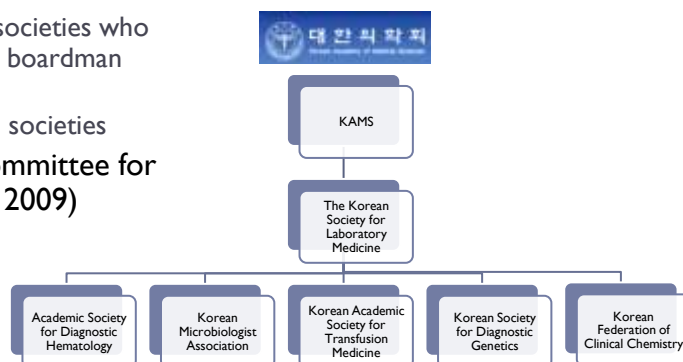
Current situation of CPG development

- ▶ Perspectives of CPGs
 - ▶ Relatively short history
 - ▶ Most of CPGs has developed by a single academic society.
- ▶ Perspectives of EBM
 - ▶ EBM concept's introduced into the medical college's curriculum
 - ▶ Individual academic societies take an interest in EBM

2011 Aug 31, GIN 

Korean Academy of Medical Sciences (KAMS)

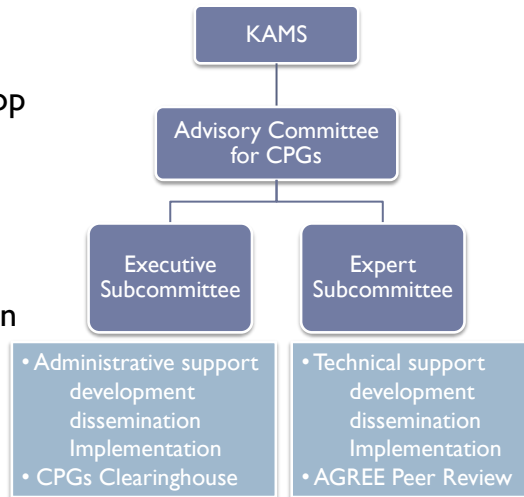
- ▶ Established 1966
- ▶ the organization of the societies of the medical science of Korea
- ▶ KAMS comprises
 - ▶ 26 mother societies who had medical boardman system
 - ▶ 146 medical societies
- ▶ Advisory Committee for CPGs (since 2009)



2011 Aug 31, GIN 

Advisory Committee for CPGs (ACC)

- ▶ Review and give a direction about CPG related issue at the top level of KAMS
- ▶ Committee member: representatives of 26 member society who had medical boardman system



2011 Aug 31, GIN 

ACC activities

- ▶ Research activities
 - ▶ Sponsored by the Ministry of Health and Welfare.
 - ▶ Goals
 - ▶ Provocating the responsibilities in evidence based medicine for Medical societies
 - ▶ Developing educational tools for CPG development
 - ▶ Supporting the technical skill and methodology in CPG development
- ▶ Outcomes & Ongoing activities
 - ▶ CPGs Clearinghouse (established in 2007): Korean Medical Guideline Information center(KoMGI)
 - ▶ Education systems
 - ▶ CPG development process
 - ▶ AGREE evaluation tool
 - ▶ Consulting system
 - ▶ AGREE based Peer Review System
 - ▶ Coordination of CPG development through multidisciplinary team approaches

2011 Aug 31, GIN 

The screenshot shows the AGREE website interface. At the top, the logo reads "AGREE Advancing the science of practice guidelines". A navigation bar includes links for Home, About, Resource Centre, Research Projects, News, Forum, and My AGREE. The main content area features a "Download AGREE II" button and a "List of translations" section. The list includes Dutch, French, Italian, Korean, Portuguese (Brazilian), and Spanish. Below this, a "List of translations in progress" lists Arabic, Basques, Chinese, Czech-Slovakian, Farsi (Persian), Portuguese (Portugal), Romanian, Russian, and Turkish. An inset image shows the cover of the "APPRAISAL OF GUIDELINES FOR RESEARCH & EVALUATION II" document, which also features the AGREE II logo and the text "K-AGREE 연구팀 안내서".

2011 Aug 31, GIN

CPGs developed under the support of the ACC

- ▶ **Korean Clinical Practice Guideline of Asthma**
 - ▶ The Korean Academy of Asthma, Allergy and Clinical Immunology
 - ▶ The Korean Academy of Tuberculosis and Respiratory Diseases
- ▶ **Korean Clinical Practice Guideline of Depressive Disorders**
 - ▶ Korean NeuroPsychiatric Association
 - ▶ Korean College of Neuropsychopharmacology
 - ▶ Korean Society for Depressive and Bipolar Disorders
- ▶ **Korean Clinical Practice Guideline of Breast Cancer**
 - ▶ Korean Breast Cancer Society
 - ▶ Korean Cancer Association
 - ▶ The Korean Society for Therapeutic Radiology & Oncology
 - ▶ The Korean Society of Radiology
 - ▶ The Korean Society of Pathologists
 - ▶ The Korean Society of Plastic and Reconstructive Surgeons
 - ▶ The Korean Society of Nuclear Medicine
 - ▶ The Korean Surgical Society

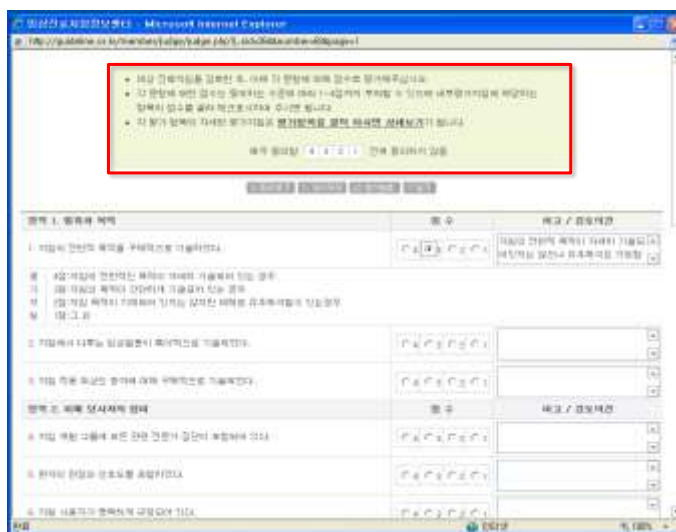
Korean Medical Guideline Information Center



2011 Aug 31, GIN



Web based AGREE Peer Review System



2011 Aug 31, GIN



제목	평가	1	2	3	4	5	6	7	8	9	10	11	12	13	14	15	16	17	18	19	20	21	22	23	
고난도 기도 관리 진료지침	2010	1	3	3	3	1	3	4	1	2	2	3	2	3	1	1	4	4	4	1	3	1	1	1	1
	2010	2	4	4	4	2	3	4	1	4	2	3	4	4	1	1	4	4	4	4	3	2	1	2	2
한국형 범불안장애 약물치료 지침서 2009**	2010	1	4	4	3	2	1	2	1	1	4	4	2	4	4	2	3	3	4	1	3	1	1	3	1
	2010	2	4	3	3	3	1	3	3	2	2	4	2	4	4	2	4	4	4	1	3	1	1	3	2
외상후 스트레스장애 근거 중심의학 지침서	2010	1	4	2	4	2	1	2	1	4	4	4	4	4	4	1	3	3	3	1	1	1	1	1	1
	2010	2	4	3	4	2	2	2	3	4	4	4	3	4	4	2	3	3	3	1	1	1	1	1	1
만성중이염 수술명의 분류법과 수술후 결과보고 방법	2010	1	3	3	4	2	1	3	4	1	1	2	3	2	4	2	2	2	2	1	1	1	1	1	1
	2010	2	2	1	2	2	1	2	1	1	1	1	1	2	3	2	4	1	2	1	2	1	1	3	1
당뇨병 진료지침	2010	1	3	2	3	2	2	2	1	3	3	3	2	3	3	2	4	4	4	1	1	4	1	1	1
	2010	2	4	4	4	3	4	3	2	4	4	4	4	3	3	3	4	4	4	4	3	4	2	2	2
만성 B형간염의 치료 **	2010	1	4	3	4	2	3	2	2	3	3	3	4	3	1	3	4	4	4	3	2	2	1	2	2
	2010	2	3	3	3	2	1	2	3	1	1	2	2	2	3	2	4	4	4	3	1	1	1	1	1

2011 Aug 31, GIN 

제목	평가	1	2	3	4	5	6	7	8	9	10	11	12	13	14	15	16	17	18	19	20	21	22	23	
고난도 기도 관리 진료지침	2010	1	3	3	3	1	3	4	1	2	2	3	2	3	1	1	4	4	4	1	3	1	1	1	1
	2010	2	4	4	4	2	3	4	1	4	2	3	4	4	1	1	4	4	4	4	3	2	1	2	2
고난도 기도 관리 진료지침	2010	1	2	3	3	3	1	3	4	1	2	2	3	2	3	1	1	4	4	4	1	3	1	1	1
	2010	2	3	3	3	3	1	3	4	1	2	2	3	3	1	1	4	4	4	1	3	1	1	1	1
1. 지침서, 권고서, 목록을 순회하여 오류가 발생하였다.	수정 필요성																								
	수정 내용																								
4월: 지침서, 권고서, 목록이 차례 차례 이루어지는 경우	수정 필요성																								
	수정 내용																								
3월: 지침서, 목록이 간헐적 이루어지는 경우	수정 필요성																								
	수정 내용																								
2월: 지침서, 목록이 간헐적 이루어지는 경우	수정 필요성																								
	수정 내용																								
1월: 그 외	수정 필요성																								
	수정 내용																								
2. 지침서에서 다루는 임상질문 목록이 순회되어 오지 않았다.	수정 필요성																								
	수정 내용																								
4월: Key question이 새로 제시 되어 있는 경우(목록에 첨가)	수정 필요성																								
	수정 내용																								
3월: Key question이 새로운 소문명, 질문(이)에 대하여, 지침서, 목록에 제시되어 있는 경우	수정 필요성																								
	수정 내용																								
2월: Key question이 새로운 소문명, 질문(이)에 대하여, 지침서, 목록에 제시되어 있는 경우	수정 필요성																								
	수정 내용																								
1월: 그 외	수정 필요성																								
	수정 내용																								

Draft Scoring Guide Revised Scoring Guide

2011 Aug 31, GIN 

경청해 주셔서 감사합니다.



▶ 2011. 3. 19. 제주도 절물휴양림

2011 Aug 31, GIN

