

LEITLINIENPROGRAMM ONKOLOGIE



Quality Management in Oncology

Building up a network between the German Guideline Program in Oncology,
Cancer Registries, and Certified Cancer Centers

Markus Follmann
Monika Klinkhammer-Schalke
Simone Wesselmann
Monika Nothacker
Ina Kopp

8th G-I-N conference

28-31 August 2011

Seoul

LEITLINIENPROGRAMM ONKOLOGIE



BACKGROUND: GERMAN NATIONAL CANCER PLAN

PARTICULAR OBJECTIVES

- #5 Certification and quality management of oncological health care institutions
- #6 evidence based guidelines in oncology
- #8 meaningful reporting of quality by cancer registries
(joint working group 'documentation')



GERMAN GUIDELINE PROGRAM IN ONCOLOGY (GGPO)

BACKGROUND AND RATIONALE

- need for quality improvement in cancer care
 - need for better knowledge transfer
 - need for a common basis to improve networking of quality initiatives
 - German National Cancer Plan
- GGPO was launched 2008, setting the goal to develop and implement high quality clinical practice guidelines (CPGs) in oncology by:

**GERMAN GUIDELINE PROGRAM IN ONCOLOGY (GGPO)**

OBJECTIVES

- to support CPG development by scientific medical societies
- to harmonize formats, procedures, and methodology of oncological CPGs
- to provide independent funding for CPG development
- to improve methodological quality of CPGs
- to improve implementation and evaluation by
 - patient guidelines
 - short / long / pocket versions of CPGs
 - performance measures / quality indicators
- to consolidate the network of quality initiatives

GERMAN GUIDELINE PROGRAM IN ONCOLOGY (GGPO)

OBJECTIVES

- to support CPG development by scientific medical societies
- to harmonize formats, procedures, and methodology of oncological CPGs
- to provide independent funding for CPG development
- to improve methodological quality of CPGs
- **to improve implementation and evaluation by**
 - patient guidelines
 - short / long / pocket versions of CPGs
 - **performance measures / quality indicators**
- to consolidate the network of quality initiatives

GGPO CONTEXT: QUALITY IMPROVEMENT IN ONCOLOGY

Clinical Practice Guidelines (CPG)

provide evidence- and consensus-based recommendations

**Cancer Registries**

assess and report processes and outcomes

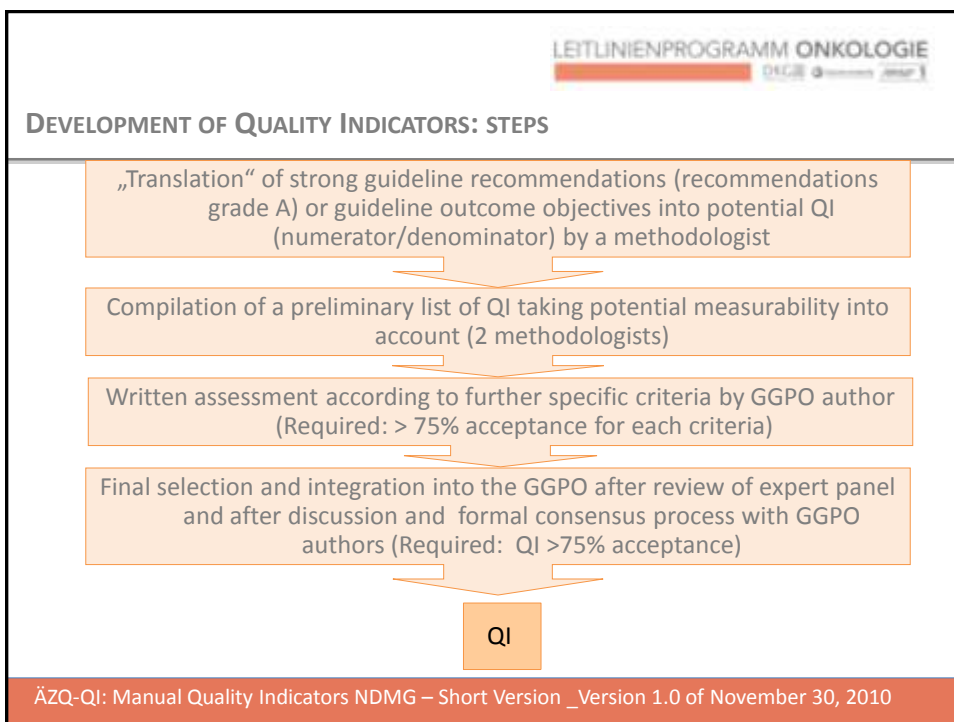
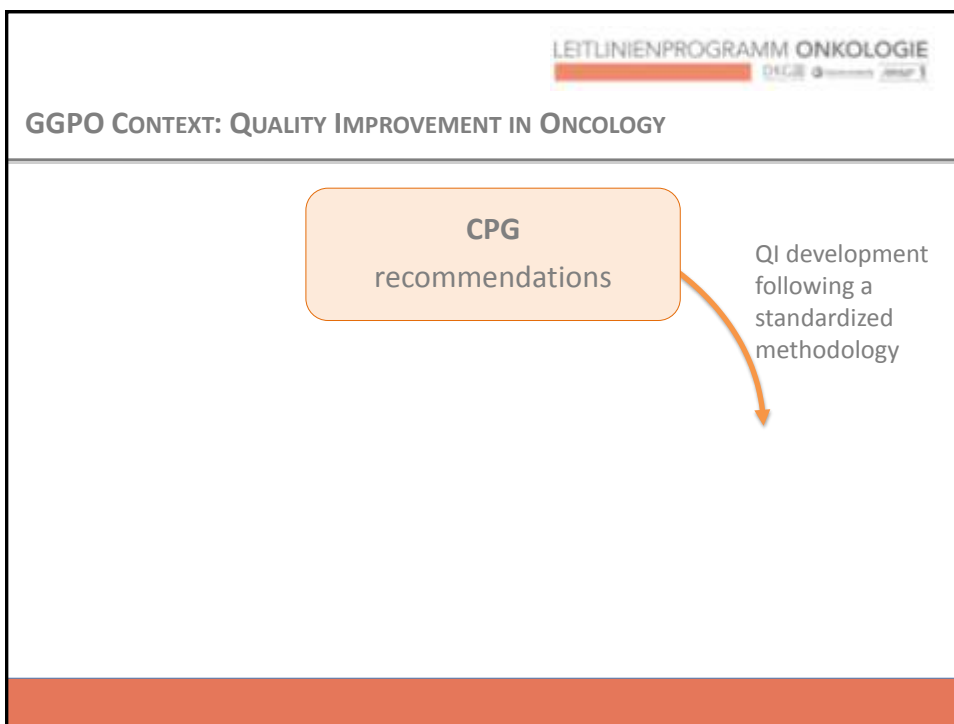
are linked with




Quality Assurance

within the framework of the German Social Code Book (§137a SGB V)

Certified Cancer Centers

support implementation – transfer of guidelines into practice

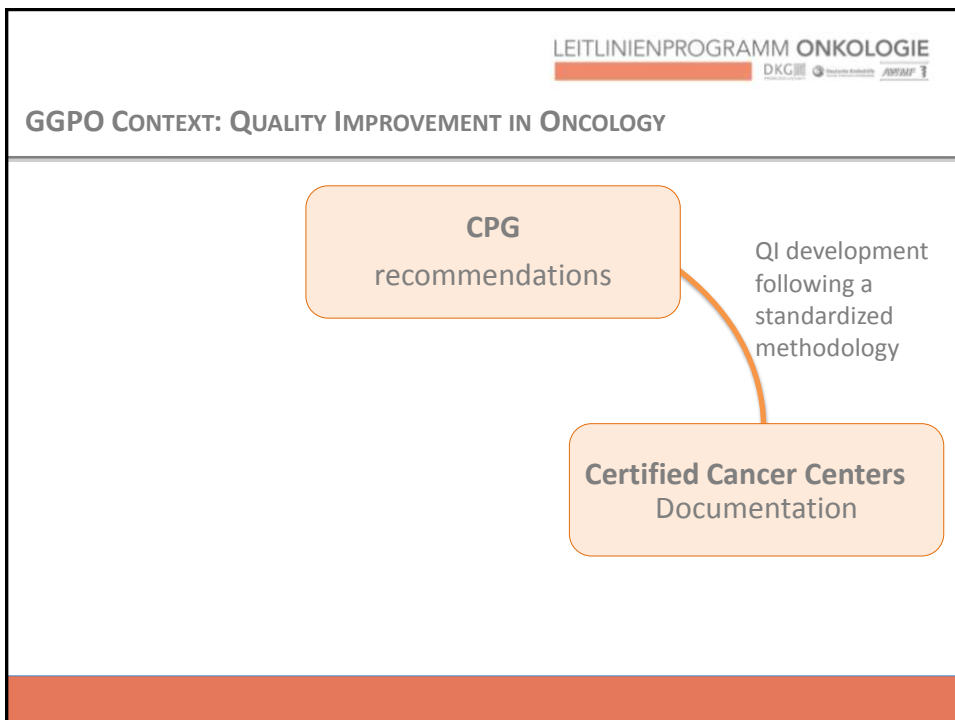


LEITLINIENPROGRAMM ONKOLOGIE
DKG   

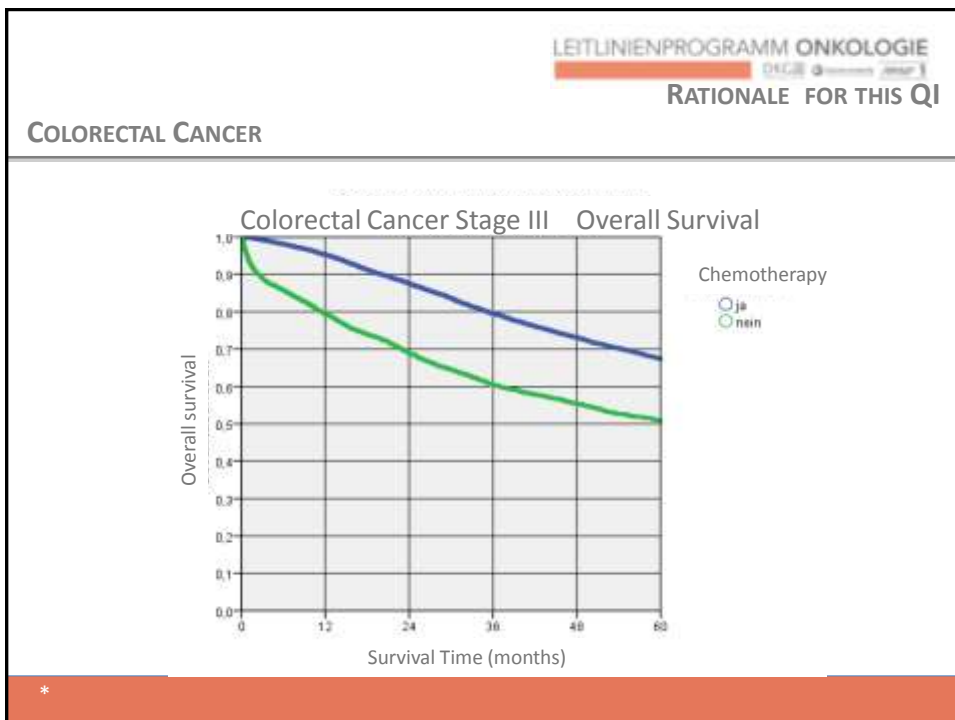
DEVELOPMENT OF QUALITY INDICATORS: THE QUALIFY INSTRUMENT *

	1 Does not apply	2 Rather does not apply	3 Rather does apply	4 Applies
1.Importance of the quality characteristic captured with the quality indicator for patients and the health care system				
2.Clarity of the definitions (of the indicator and its application)				
3.Indicator expression can be influenced by providers				
4. Evidence and Consensus Basis of the Indicator* <i>*criteria modified for GGPO process: added: consensus basis</i>	only strong recommendations – not re-assessed			
5. Consideration of potential risks / side effects of the indicator: Are there risks for inappropriate care which cannot be compensated for?	yes		no	

* <http://www.bqs-qualify.com/anw>



LEITLINIENPROGRAMM ONKOLOGIE DKG		
GUIDELINE BASED QI: EXAMPLE I COLORECTAL CANCER		
Guideline Recommendation	Goal	Quality Indicator (Reference Range)
Adjuvant Chemotherapy is indicated in pts with colon carcinoma UICC Stage III who underwent R0 resection. LoE 1a, GoR A	High rate of adjuvant chemotherapies in pts UICC stage III	<i>Numerator:</i> Pts with colon carcinoma UICC III and R0-resection having received chemotherapy <i>Denominator:</i> All pts with Colon carcinoma UICC III and R0-resection (>80%)
* Schmiegel et al: S3-Guideline on Colorectal Cancer, 2008 (Update)		

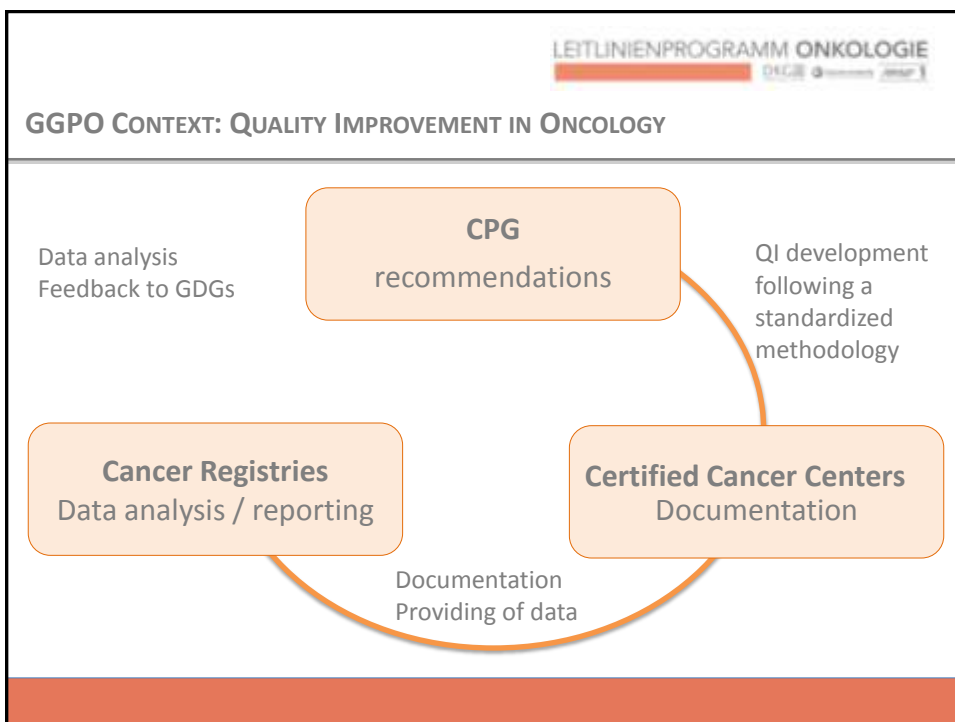


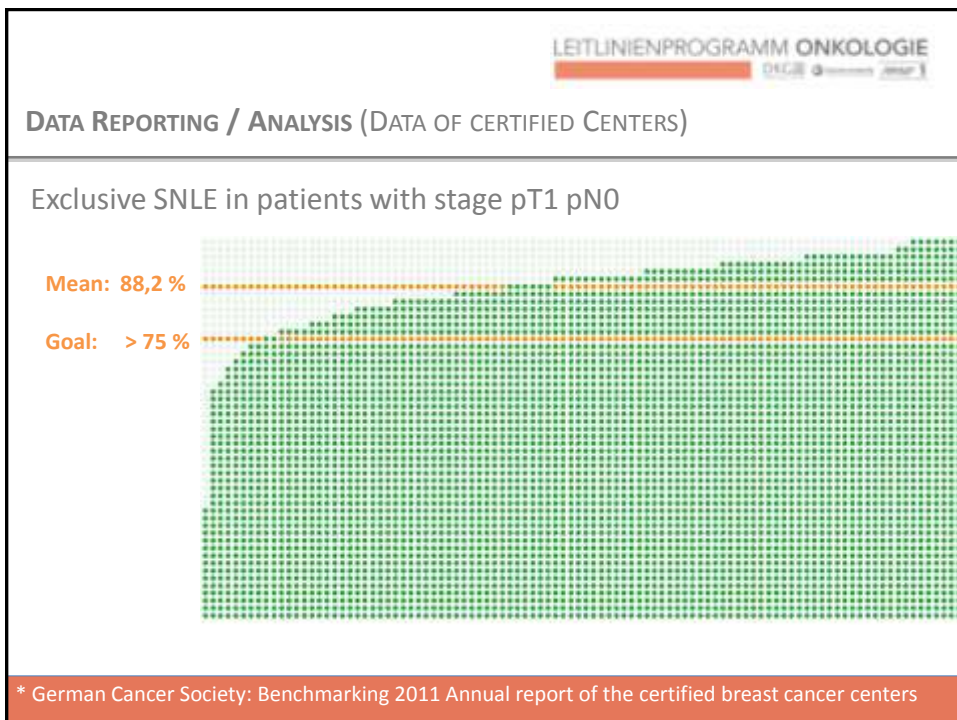
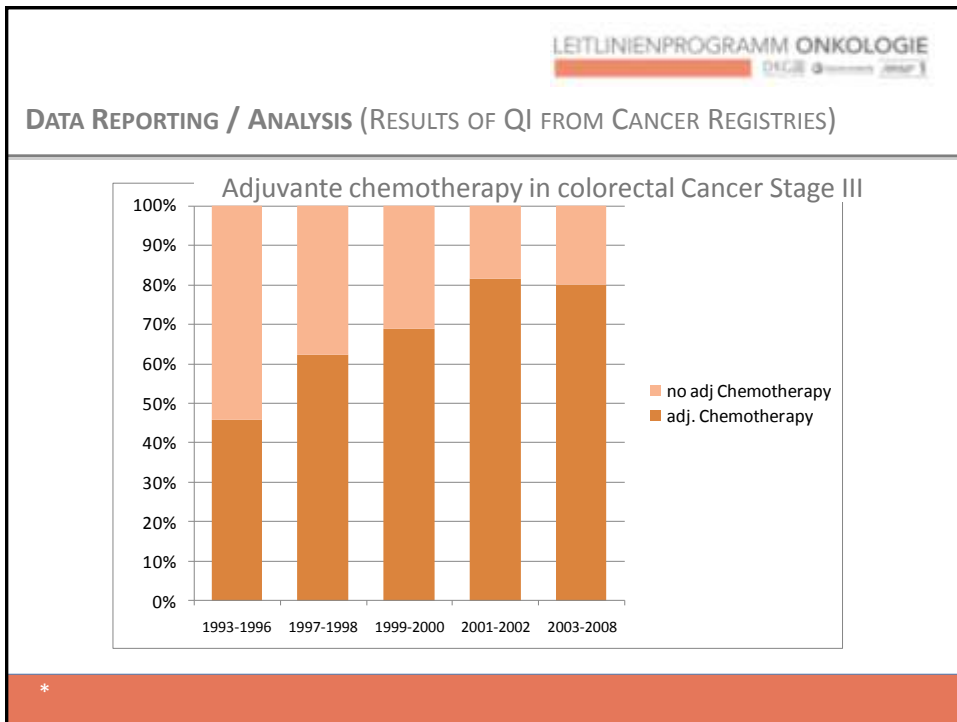
LEITLINIENPROGRAMM ONKOLOGIE
ÖGGE | ÖGK | ÖGK | ÖGK

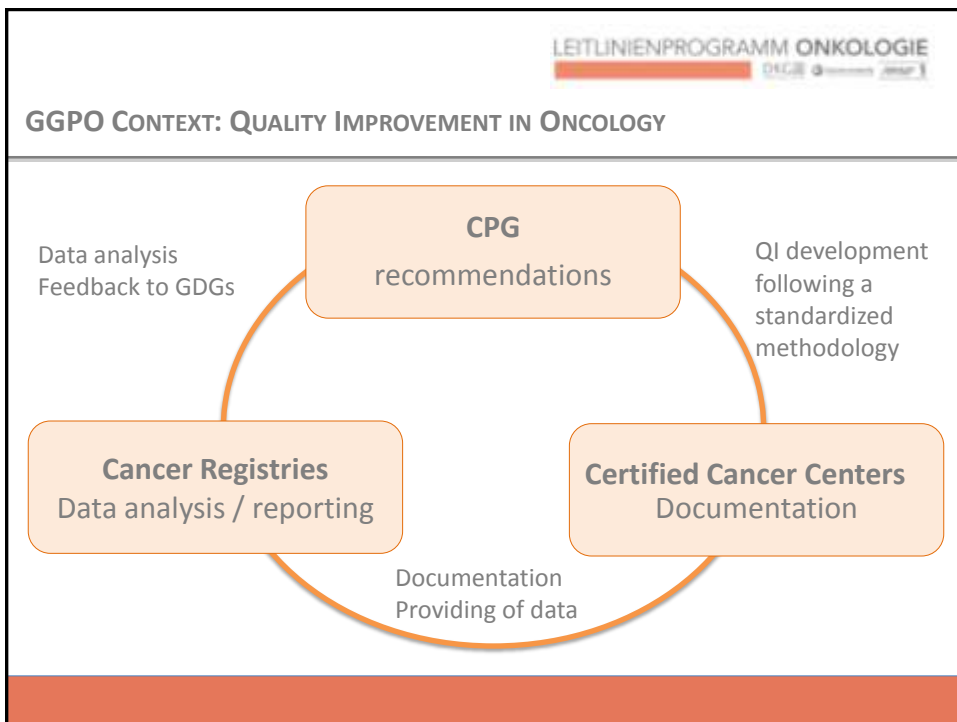
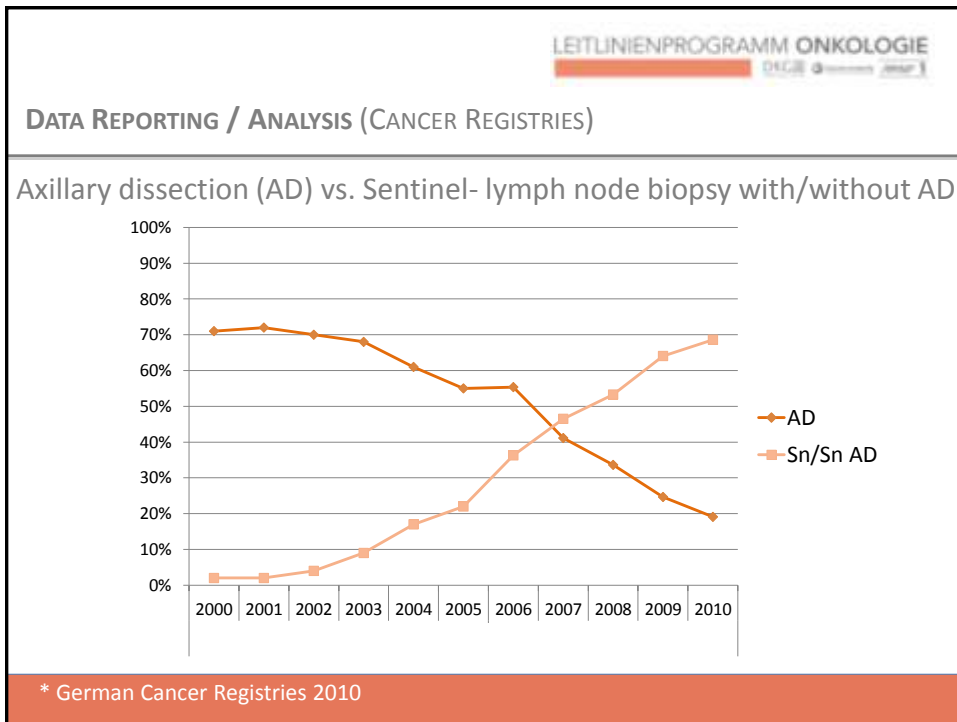
GUIDELINE BASED QI: EXAMPLE II
BREAST CANCER

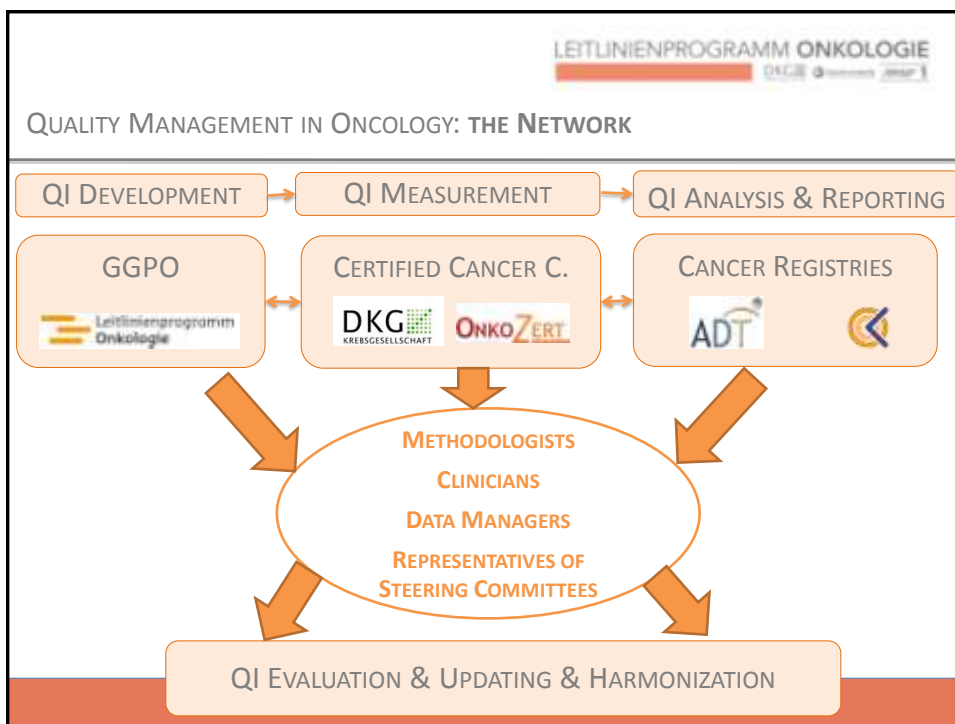
Guideline Recommendation	Goal	Quality Indicator (Reference Range)
Investigation of nodal status should be performed by SNLE. GoR A Morbidity after SNLE is reduced in comparison to axillar dissection. LoE 1	High number of excl. SLNE for assessing nodal status in pts with invasive breast cancer pT1 pN0	Numerator: number of exclusive SNLE in invasive breast cancer pT1 pN0 Denominator: number of all primary surgery of invasive breast cancer pT1 pN0 (>75%)




* Kreienberg et al: S3-Guideline on Breastcancer, 2008 (Update)









LEITLINIENPROGRAMM ONKOLOGIE
DKG   

CONCLUSION: QUALITY MANAGEMENT IN ONCOLOGY

POINTS TO CONSIDER

- QI are crucial tools for implementation and evaluation of CPG 's
- QI development from CPGs should be established according to a standardized methodology
- These QI should be fitted into existing QM structures and duplication of documentation should be avoided
- A network between GDGs and institutions responsible for measuring and analyzing QM data is essential in order to update and review QI

Thank you!



... view from the GGPO Office Berlin, Germany