

Web-based adjuncts to guideline dissemination

Novel interventions from the Scottish Intercollegiate Guidelines Network (SIGN)

Craig WL, Green RV, El-Ghorr A,
James R & Twaddle S

SIGN

- Set up in 1993 as a joint initiative of Medical Royal Colleges and professional organisations, now part of NHSScotland but retains editorial independence
- Around 20 guideline development groups at any one time, involving around 350 healthcare professionals and lay representatives
- Website **www.sign.ac.uk** attracts around 1.8 million hits per month
- In 2009 SIGN Council formed a subgroup to consider & support the needs of doctors & dentists in training

Postgraduate Medical Training

- UK Foundation Programme – 2 years
- Specialty training, competitive entry, 3-8 years after Foundation Programme
- Involves requirement to develop understanding of clinical governance and undertake clinical audit
- SIGN guidelines offer the basis for clinical audit
- Needs of SIGN + potential of doctors and dentists in training + their requirement for audit equals....

A win – win situation



Pilot work

- Doctors & dentists in training group members:
 - selected suitable extant guidelines
 - drafted user friendly proformas
 - ran small pilots
 - modified proformas in light of feedback
- The group also developed generic guidance on audit methodology to be included on the SIGN website, along with audit proformas

Pilot work

- First clinical areas:
 - VTE
 - non pharmacological treatment of depression
 - head injury
 - dental caries
 - hip fracture
 - diabetes

110 Early management of adult patients
with a head injury
Quick Reference Guide

May 2009

COPIES OF ALL SIGN GUIDELINES ARE AVAILABLE
ONLINE AT WWW.SIGN.AC.UK

Adult Head Injury Patients Discharged From the Emergency Department

SCORE

Q1

Q2

Q3

Q4

Q5

Q6

Q7

TOTAL /7

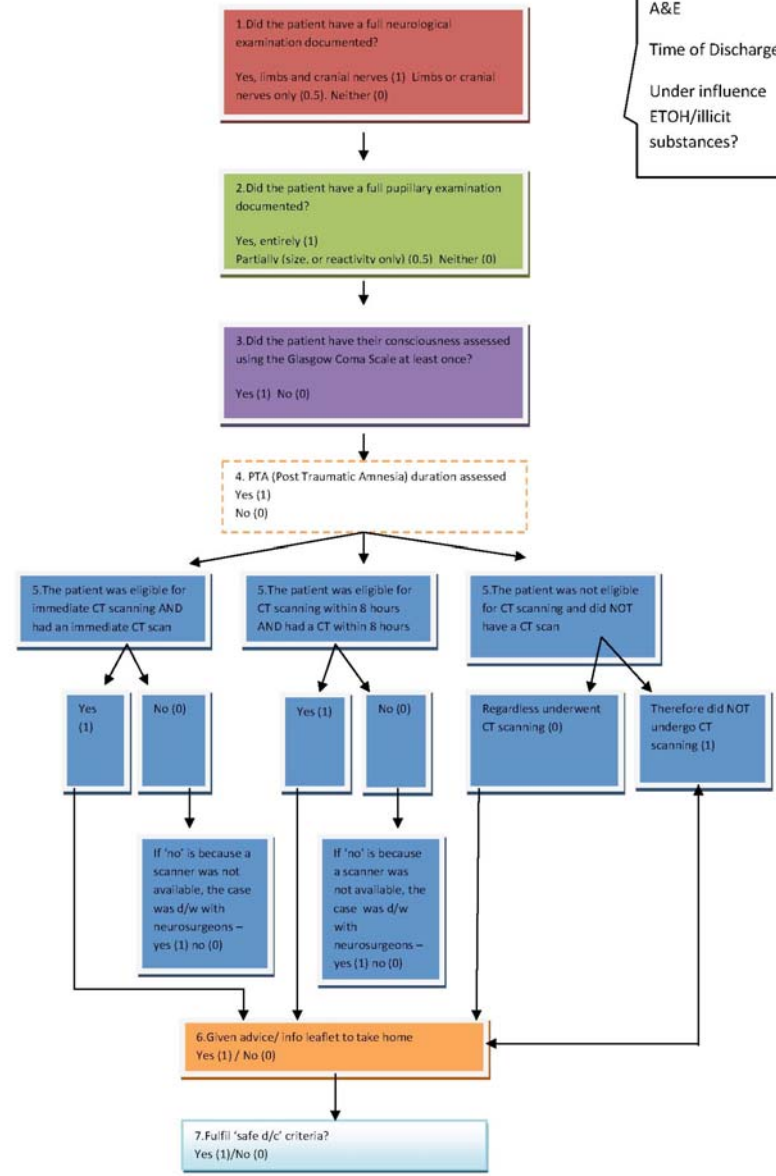
Additional Information

DOB:

Time of Arrival in A&E

Time of Discharge

Under influence ETOH/illicit substances?



Head injury preliminary results

- Results from first 35 users shows variable compliance with individual elements, ranging from 43% for '*fulfils safe discharge criteria*' to 80% for '*patient had their Glasgow Coma Score assessed at some stage*'
- May reflect the issue of retrospective case note review **or** practice which requires further investigation
- Useful information for both junior doctors and SIGN

Further work

- SIGN are currently developing the facility for uploading audits to facilitate feedback on use of guidelines
- Simple, downloadable audit forms will accompany all new guideline publications in the future

Feedback from pilot work

- *'This handy tool really helped me to overcome the fear and mystery of clinical audit'*
- *'I thought the form was easy to use and self explanatory'*
- *'informed practice and points that need to be improved upon'*

Summary Key Points

- Doctors & dentists in training group have developed a series of simple, reproducible audit forms and checklists, pertaining to key recommendations
- Audit provides a means of awareness raising, dissemination and implementation as well as raising standards
- Use of internet for dissemination and feedback/ data gathering is novel for SIGN and will help to answer questions around 'what impact to clinical guidelines have?'

Thank you

