

# LEITLINIENPROGRAMM ONKOLOGIE



## Patient Guidelines in Oncology

A comparison of international standards and methodologies

Markus Follmann  
Silke Kirschning  
Corinna Schaefer  
Ina Kopp

G-I-N Conference, Chicago, August 25-28, 2010

# LEITLINIENPROGRAMM ONKOLOGIE



## BACKGROUND

OBJECTIVE

METHODS

RESULTS

CONCLUSION

LEITLINIENPROGRAMM ONKOLOGIE  
DKG Deutsche Krebsgesellschaft AWMF

---

**German Guideline Program in Oncology (GGPO)**

---

**LAUNCHED 2008**

**COOPERATION**  
Association of the Scientific Medical Societies  
German Cancer Society  
German Cancer Aid

---

LEITLINIENPROGRAMM ONKOLOGIE  
DKG Deutsche Krebsgesellschaft AWMF

---

**German Guideline Program in Oncology (GGPO)**

---

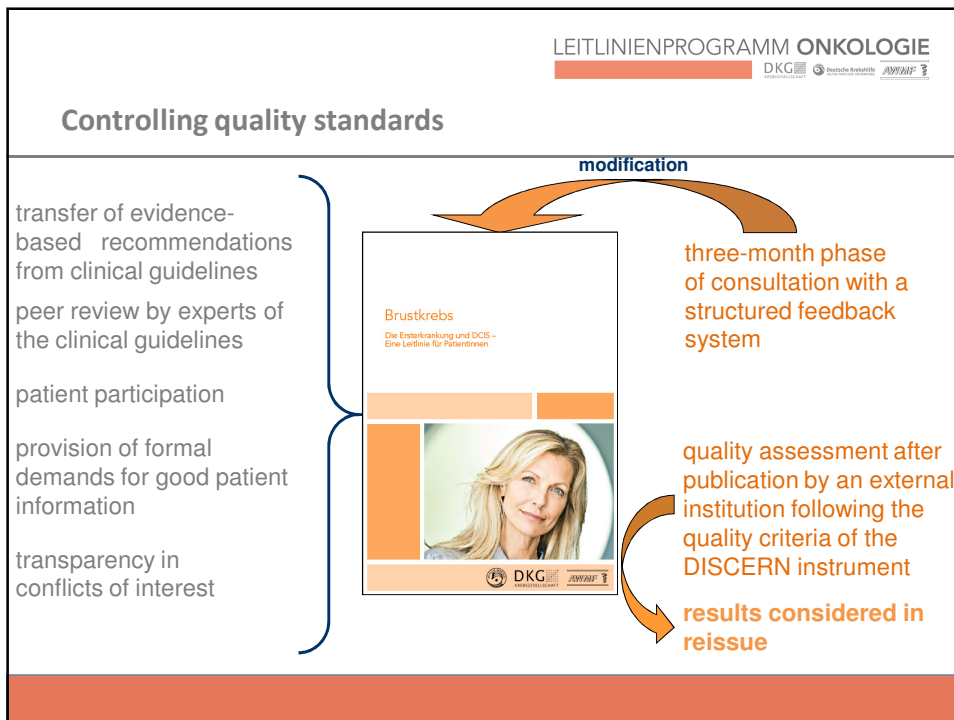
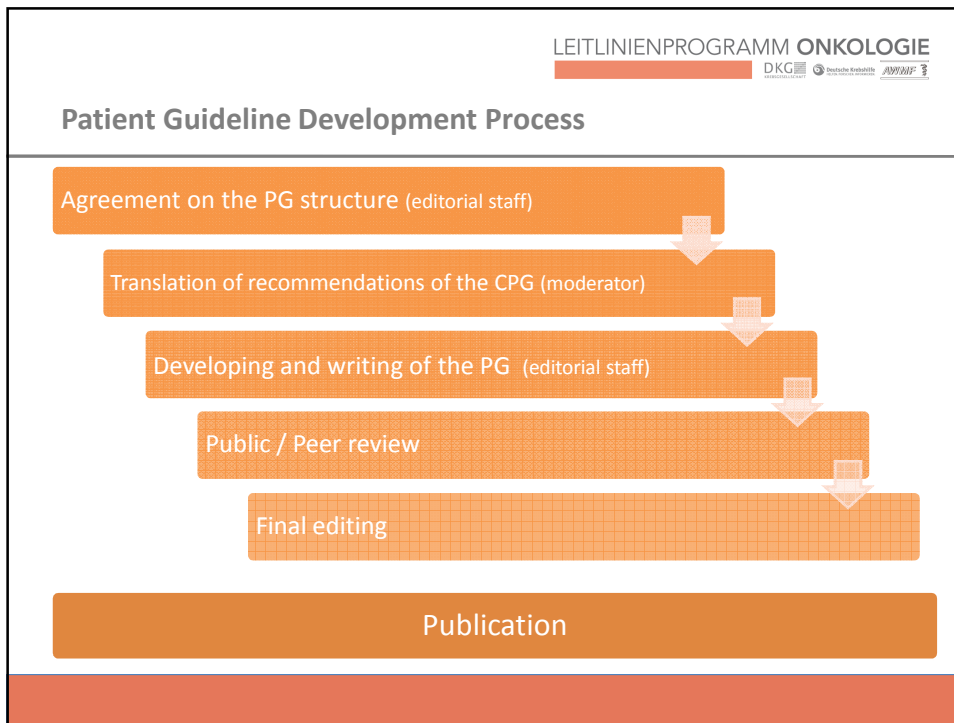
**OBJECTIVES**

Promotion of CPG development  
Prioritization of topics  
Improvement of implementation and evaluation

- **Patient guidelines**
- Short / Long versions of CPGs
- Quality indicators (linked to registries)

Independent funding

---



## Patient Guideline?

GGPO's view of "Patient Guidelines"

Patient guidelines are providing information about cancer in order to enable an informed decision making of patients.

They offer patients the opportunity to address relevant questions a part from the clinical aspects of disease and to bring in own experiences

Key element:

→ Translation of the evidence based recommendations of a current CPG into an understandable language for consumers

BACKGROUND

**OBJECTIVE**

METHODS

RESULTS

CONCLUSION

**Objective**

Assessment of the inventory of oncological patient guidelines within G-I-N member organisations

Comparison of patient guideline development

BACKGROUND

OBJECTIVE

**METHODS**

RESULTS

CONCLUSION

## Screening process

Screen Homepages all G-I-N current and former members

- By search functions using terms:
  - „patient information“ „patient guideline“ „lay version“ ,
  - „consumer resources“
- By hand

Check documents

- Oncological topic
- PG linked to CPGs? Translation of Recommendations?
- Methodology described?




BACKGROUND

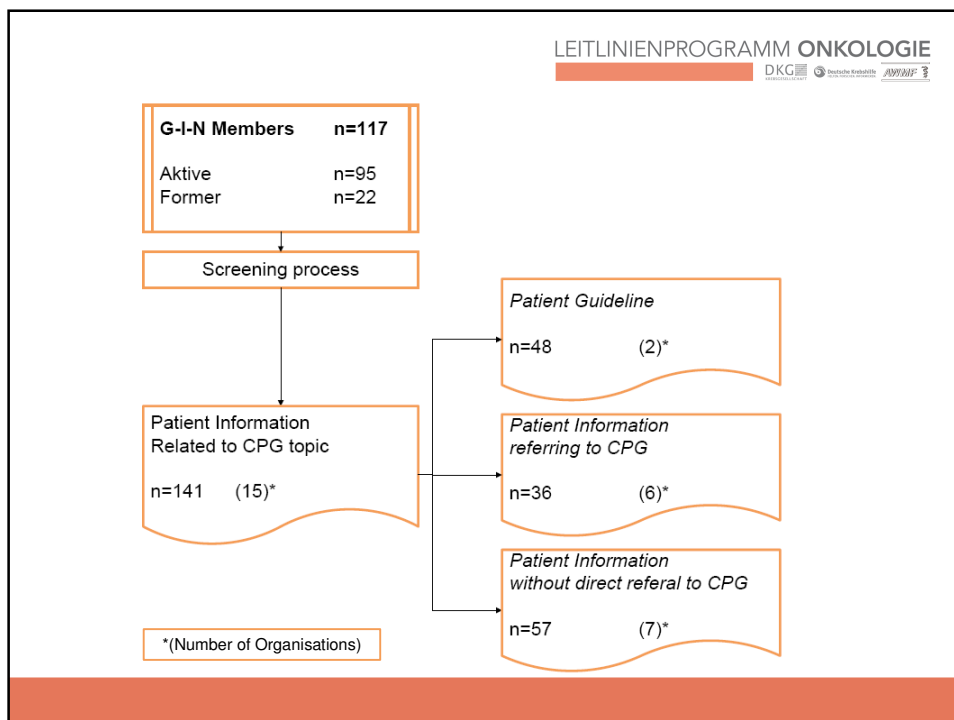
OBJECTIVE


METHODS


**RESULTS**

CONCLUSION

LEITLINIENPROGRAMM ONKOLOGIE	
  	
<b>Results</b>	
Search performed on February/March 2010	
G-I-N Members (current and former) n=117	
Available Homepages	n=113
Included by language E,G,D,F	n=99
<b>Homepages with PI (Oncology)</b>	<b>n= 15</b>



LEITLINIENPROGRAMM ONKOLOGIE	
	
<i>Patient Guideline</i> n=48 (2)*	NICE GGPO (ASMS, GCS)
<i>Patient Information referring to CPG</i> n=36 (6)*	ACCC      ACP ASCO      FNCLCC SIGN      NZGG
<i>Patient Information without direct referral to CPG</i> n=57 (7)*	AUA, NBOCC et al.

LEITLINIENPROGRAMM ONKOLOGIE

<b>Limitations</b>
Search performed on the world wide web: <ul style="list-style-type: none"> <li>-&gt; missing of relevant data documents not found on the homepage</li> <li>-&gt; search is fairly reproducible</li> <li>-&gt; language restriction</li> </ul>



## Patient Guidelines in Oncology

Patient Guidelines pose an important tool for guideline implementation by translating recommendations and background information of the CPG into an understandable language and enabling patients to share medical knowledge in order to make decisions on the best available evidence

## Patient Guideline Development Process

Agreement on the PG structure (editorial staff)

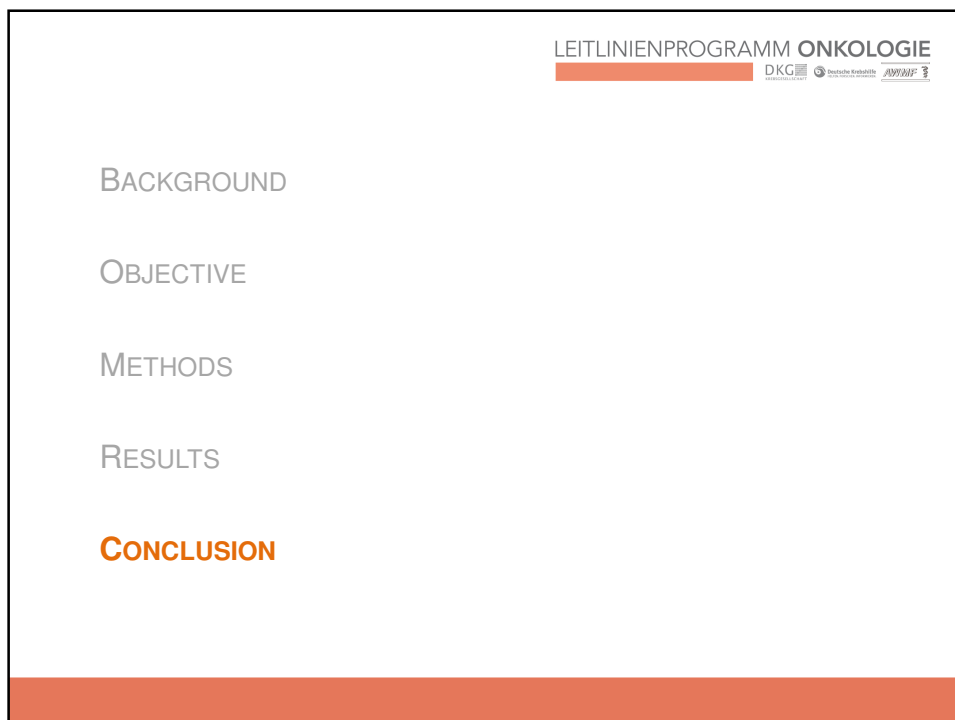
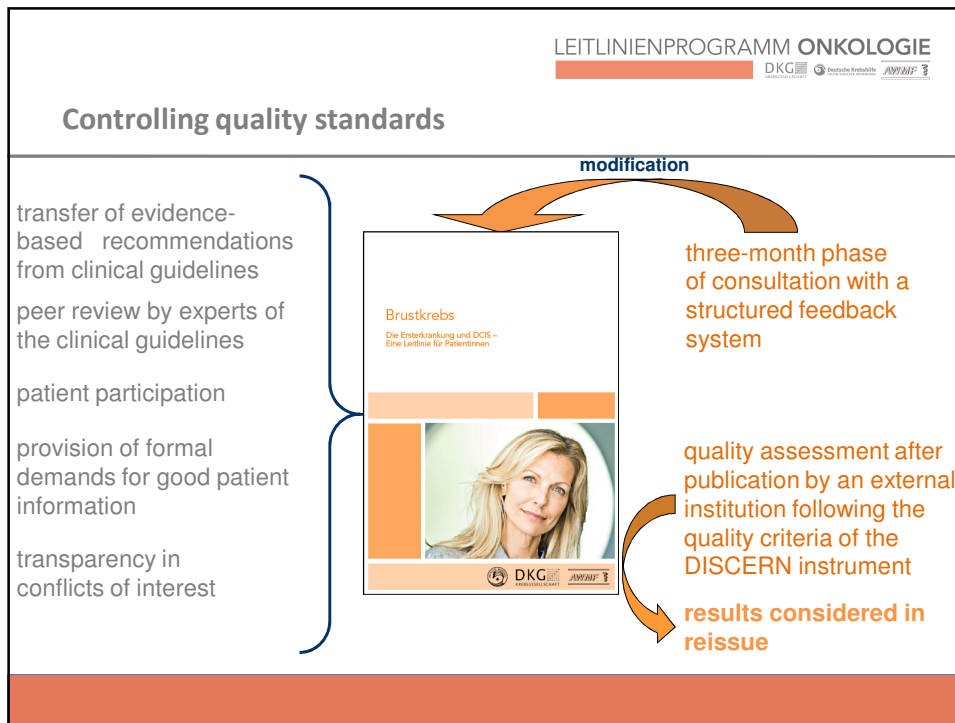
Translation of recommendations of the CPG (moderator)

Developing and writing of the PG (editorial staff)

Public / Peer review

Final editing

Publication



## Conclusions

Some G-I-N members are offering Patient Information on Cancer topics

Quality and format of this information is quite inhomogeneous

Methodology is generally not reported (and therefore incomparable)

Development of Patient Guidelines (PG) translating current CPGs are uncommon among G-I-N members

## Implications

- Methodology of development of PI should be reported
- The need of PG in general and explicit translation of the recommendations of a CPG should be discussed
- A methodology of PG development could be a topic of interest within the G-I-N Community

Thank you!

