

Adaptation of guideline adaptation methodology for Asian countries

Kim Soo Young, Kim, Nam-Soon*
Hallym university medical college
*Korea Institute for Health and Social Affairs

1

Outlines

- ▶ Suggestion of ADAPTE process Adaptation
- ▶ Quality Assessment of Adapted Guidelines
- ▶ Group discussion

2

Background of this workshop 1

- ▶ Asian countries, CPG are increasingly proposed to improve the quality of patient care
- ▶ *de NOVO* guideline development may not be feasible in that region.
- ▶ Adaptation of guidelines can be an alternative
- ▶ ADAPTE collaboration suggested ADAPTE process

3

Background of this workshop 2

- ▶ Many CPG developer in Asian countries may think that the ADAPTE process reflects mainly the experiences of developed countries
- ▶ So Asian countries may need a somewhat different process for guideline adaptation reflecting Asian countries' experiences and situation

4

Background of this workshop 3

- ▶ Assessing quality guideline using AGREE tools is very important.
- ▶ The purposes of the AGREE tools
 1. assess the quality of guidelines
 2. provide a methodological strategy for the development of guidelines,
 3. inform what information and how information should be reported in guidelines.

5

Background of this workshop 4

- ▶ AGREE can not assess the quality of adapted guideline
- ▶ Need tool for assess the quality of adapted guideline
- ▶ Also need
 - standard methodological strategy for the adaptation guidelines
 - Standard of reporting adapted guidelines.
- ▶ So develop the tools to assess quality of adapted guidelines is important in Asian countries

6

Purpose

- ▶ To propose what parts should be tailored in the process of guideline adaptation in Asian countries and how can evaluate the adapted guidelines.

7

Suggestion of ADAPTE process Adaptation for Asian countries

Kim Soo Young M.D.
Hallym university medical college
Research of National evidence based healthcare collaborating
Agency (NECA)

8

Outlines

- ▶ Introduction
- ▶ Contents of adaptation of ADATE process
- ▶ Summary

9

Introduction

10

ADAPTE process

- ▶ Systematic approach to adapting guidelines developed by ADAPTE collaboration
- ▶ Evaluated and modified (Version 2.0)
- ▶ Source of evidence : clinical practice guidelines
- ▶ Mainly reflected the experience of developed countries.

11

Context of regions other than Western countries

- ▶ Little guideline development experience
- ▶ Principle of EBM is not familiar
- ▶ Local journals not indexed in search engines (PubMed, Embase)
- ▶ Difference of prevalence, cultural, organizational contexts may be greater than the differences between Western countries

12

Adaptation of ADAPTE may be needed in Asian countries

- ▶ Need search for local evidence
- ▶ Need search for epidemiology of local region
- ▶ Need process simplification for feasibility
- ▶ Need to comply with usual CPG development experience

13

Process of Adaptation of ADPTE

- ▶ Translation of ADPTE manual and toolkit :
 - Korean CDC, 2009
 - Korean manual for guideline adaptation version 1
- ▶ Guideline development project using ADPTE process collaborated with Korean depression research center.



강원대학교병원 KGC

14

Process of Adaptation of ADPTE II

- ▶ Expert meeting for adaptation of ADAPTE
- ▶ Revise the manual for guideline adaptation
 - version 2
 - National evidence based healthcare collaborating Agency(NECA), 2011

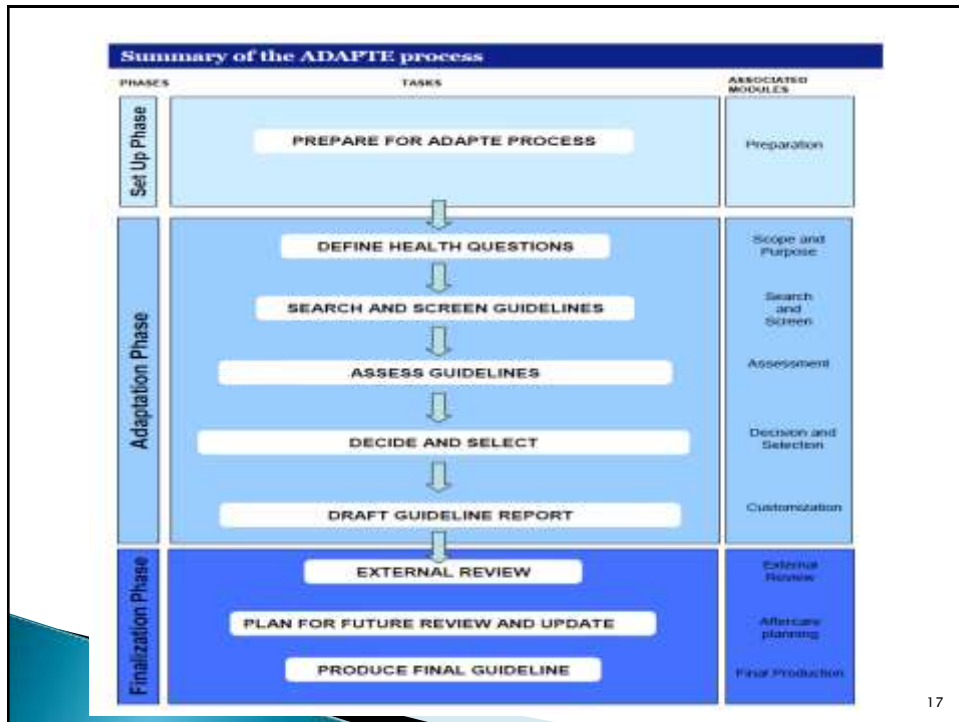


15

The summary of adaptation

- ▶ The overall framework is maintained
- ▶ Changed the sequence of some steps
- ▶ Some steps were deleted, combined, renamed added or modified.
- ▶ Some steps were considered as optional rather than mandatory

16



Phase and module of adaptation

| ADAPTE process | Suggestion |
|---|---|
| <ul style="list-style-type: none"> •Set Up <ul style="list-style-type: none"> • preparation •Adaptation phase <ul style="list-style-type: none"> •Scope and purpose •Search and screen •Assessment •Decision and selection •customization •Finalization <ul style="list-style-type: none"> •External review •Aftercare planning •Final production | <ul style="list-style-type: none"> •Set Up <ul style="list-style-type: none"> •Preparation •Scope and purpose •Adaptation phase <ul style="list-style-type: none"> •Search and screen •Assessment •Decision and selection •Customization •Finalization <ul style="list-style-type: none"> •External review •Update planning •Final production |

Set up phase

19

Preparation module

| ADAPTE process | Suggestion |
|---|---|
| 1. Check whether adaptation is feasible | 1. Select a topic |
| 2. Establish an organizing committee | 2. Establish an development group |
| 3. Select a topic | 3. Review existing guidelines |
| 4. Identify skills and resources needed | 4. Determine of guideline development methodology |
| 5. Complete set-up tasks | 5. Complete set-up tasks |
| 6. Write protocol | |

20

Step 1 : Select a topic

| ADAPTE process | Suggestion |
|--|--|
| <ul style="list-style-type: none"> •After review of existing guidelines and establishment of organizing committee | <ul style="list-style-type: none"> •Usually topic selection is first stage in our situation • Three sub-process for topic selection <ul style="list-style-type: none"> •Topic Identification •Topic Prioritization •Topic refinement |

21

Step 2 : Establish an guideline development group(GDG)

| ADAPTE process | Suggestion |
|--|--|
| <ul style="list-style-type: none"> •Two steps <ul style="list-style-type: none"> • Establish an organizing committee •Identify skills and resources needed | <ul style="list-style-type: none"> • organizing committee is not always needed • organizing committee, GDG, advisory committee may be established as needed. |

22

Step 3 : Review existing guidelines

| ADAPTE process | Suggestion |
|--|---|
| <ul style="list-style-type: none"> • related step 1 “ check whether adaptation is feasible” | <ul style="list-style-type: none"> •Review existing guidelines is important process •Recording the characteristics of guidelines •Determine inclusion and exclusion criteria |

23

Step 4 : Determine guideline development methodology

| ADAPTE process | Suggestion |
|--|--|
| <ul style="list-style-type: none"> • related step 1 “ check whether adaptation is feasible” | <ul style="list-style-type: none"> • <i>de novo</i> guideline development vs. adaptation of guideline • combination of adaptation and <i>de novo</i> |

24

adaptation + *de novo*

- ▶ According to PICO
 - Some PICO by adaptation
 - Some PICO by de novo
- ▶ Adding new information
 - Recent evidence
 - Local evidence or information

25

Scope and purpose module

| ADAPTE process | Suggestion |
|---|---|
| <ul style="list-style-type: none"> • In Adaptation phase • Determine the health questions • PIPOH may be for key questions | <ul style="list-style-type: none"> • in Set Up phase • Before write protocol • SCOPE(PIPOH) must be differentiated with key questions(PICO) • In a guideline, ONE PIPIH and many PICOs. |

26

Adaptation phase

27

Search and screen module

| ADAPTE process | Suggestion |
|---|---|
| <ul style="list-style-type: none">• Search for guidelines• Screen retrieved guidelines• Reduce total number of guidelines | <ul style="list-style-type: none">• Search for guidelines• Selection of guidelines• Refinement of scope and key questions |

28

Search for guidelines

| ADAPTE process | Suggestion |
|--|---|
| <ul style="list-style-type: none"> •Guideline clearinghouse •Search engines •Internet search engine | <ul style="list-style-type: none"> •Guideline clearinghouse <ul style="list-style-type: none"> •Add Korean clearinghouse(KGC, KOMGI) •Search engines <ul style="list-style-type: none"> •Add Korean database(KoreaMed, Kmbase) •Internet search engine <ul style="list-style-type: none"> • Chinese, Japanese guideline search |

29

The screenshot displays a Google search for '胃不全のガイドライン' (Guidelines for Gastric Dysfunction). The search results are primarily from KoreaMed and KGC. The KoreaMed search results are visible at the bottom of the page, showing a list of articles with titles and dates.

Search Results from KoreaMed:

- Guidelines of Treatment for Peptic Ulcer Disease in Special Conditions. *Kim JH, Moon JH, Joo SH, Shin YG, Park SK. Korean College of Helicobacter and Upper Gastrointestinal Research; Korean Association of Gastroenterology. Korean J Gastroenterol. 2009 May;114(7):318-327. Korea. doi: 10.4158/kjg.2008.24.3.318.*
- Changes of Parathyroid Hormone and Vitamin D Metabolites According to Estimated Glomerular Filtration Rate in Chronic Kidney Disease Patients.

30

Selection of guidelines

| ADAPTE process | Suggestion |
|---|--|
| <ul style="list-style-type: none"> • Screen retrieved guidelines <ul style="list-style-type: none"> • Relevance (Scope) • Reduce total number of guidelines <ul style="list-style-type: none"> • AGREE instrument | <ul style="list-style-type: none"> • Selection of guideline by relevance and AGREE II instrument |

31

Refinement of scope and key questions

| ADAPTE process | Suggestion |
|--|---|
| <ul style="list-style-type: none"> • included in Screen retrieved guidelines step | <ul style="list-style-type: none"> • may change after selection and summary of guidelines • Protocol may be finalized |

32

Assessment module

| ADAPTE process | Suggestion |
|---|---|
| <ul style="list-style-type: none"> •Assess guideline quality •Assess guideline currency •Assess guideline content •Assess guideline consistency •Assess guideline acceptability/ applicability | <ul style="list-style-type: none"> •Same process |

33

Assess guideline quality

| ADAPTE process | Suggestion |
|---|--|
| <ul style="list-style-type: none"> • Using AGREE | <ul style="list-style-type: none"> • Using AGREE II, K-GINE, QUADAG instrument |

34

Assess guideline currency

| ADAPTE process | Suggestion |
|---|---|
| <ul style="list-style-type: none"> • qualitative assessment about currency of evidence | <ul style="list-style-type: none"> • currency of evidence can't be judged without systematic search. • systematic search can be formal process for this step • PubMed, systematic review and RCT after search date of guideline • Domestic database search must be done |

35

Assess guideline content

| ADAPTE process | Suggestion |
|---|--|
| <ul style="list-style-type: none"> • Using recommendation matrices | <ul style="list-style-type: none"> • same |

36

Assess guideline consistency

| ADAPTE process | Suggestion |
|---|--|
| <ul style="list-style-type: none"> • Three evaluation <ul style="list-style-type: none"> • Search and selection of evidence • Selected evidence and interpretation of evidence • Interpretation and recommendation • If no? | <ul style="list-style-type: none"> • Too complex • Need knowledge of EBM • may be optional step |

37

Assess guideline acceptability/ applicability

| ADAPTE process | Suggestion |
|---|--|
| <ul style="list-style-type: none"> • Acceptability <ul style="list-style-type: none"> • Match the population • Patient view and preference • Match the benefit of recommendation implementation • Applicability <ul style="list-style-type: none"> • Available in context • Available necessary expertise • Organizational barriers | <ul style="list-style-type: none"> • For evaluation of acceptability, applicability <ul style="list-style-type: none"> • Domestic database search <ul style="list-style-type: none"> • Baseline risk • Therapeutic effects • Epidemiological data • Expert consult may be needed |

38

Decision and selection module

| ADAPTE process | Suggestion |
|--|--|
| <ul style="list-style-type: none"> • review assessments to aid in decision making • Select between guidelines and recommendations to create an adapted guideline | <ul style="list-style-type: none"> • review assessments • Select between guidelines and recommendations • grade the strength of recommendation |

39

Grade the strength of recommendation

| ADAPTE process | Suggestion |
|--|--|
| <ul style="list-style-type: none"> • no specific steps or remarks | <ul style="list-style-type: none"> • Giving a Grading on recommendation is important process for guidelines development • Grade the strength of recommendation according to original guideline's grading system |

40

Grading methodology in adaptation

- ▶ **Adopt grading**
 - same grading methodology Ex) GRADE to GRADE
- ▶ **Adopt quality of evidence**
 - same LOE Ex) USPSTF to GRADE
 - grade the strength of recommendation by their own system
- ▶ **Translate original grading system to their own system**
 - Similar grading methodology
 - Ex) AHRQ to GRADE
- ▶ **Grade by evidence of original guideline**
 - LOE, SOR their own grading system evidence in original guideline
 - Ex) SIGN to GRADE

41

Finalization phase

42

Finalization phase

| ADAPTE process | Suggestion |
|--|--|
| <ul style="list-style-type: none"> •External review and acknowledgement module •Aftercare planning module •Final product module | <ul style="list-style-type: none"> •External review and acknowledgement module •Update(revision) module •Final product module |

43

External review

| ADAPTE process | Suggestion |
|--|---|
| <ul style="list-style-type: none"> •External review by a group of experts, stakeholders(users), and policy makers | <ul style="list-style-type: none"> • can be differentiated to <ul style="list-style-type: none"> •Peer review •Consult with stakeholder •Pilot test for target users |

44

Summary

45

Main changes of suggested adaptation process

- ▶ **module change**
 - Scope and purpose module to set-up phase
- ▶ **Added steps**
 - Review of existing guidelines
 - Refinement of scope and key questions
 - Determine guideline development methodology
 - Grade the strength of recommendations
- ▶ **Steps combined**
 - Establish a GDG
 - Selection of guidelines

46

Summary II

- ▶ Sequence of steps is changed
 - Preparation module
- ▶ Steps that may be optional
 - Assess guideline consistency
 - Some set up tasks
 - Pilot test for target users
 - Stakeholder consultation
 - Consult to original guideline developer

47

Summary III

- ▶ Some new notions are suggested
 - Combination of adaptation and *de novo*
 - Grading methodology in adaptation
 - SCOPE(PIPOH) must be differentiated with key questions (PICO)
 - External review can be differentiated to Peer review, Consult with stakeholder, Pilot test for target users

48

Summary IV –additional tasks for Asian regions

- ▶ Search of local database for local evidence, epidemiological data
- ▶ Search of local guideline clearinghouse
- ▶ Systematic search for currency evidence
- ▶ Determine guideline development methodology

49

Implication of ADAPTE adaptation

- ▶ ADAPTE process is well-developed methodology for guideline adaptation and may be feasible in Asian countries including Korea.
- ▶ ADAPTE process may reflect mainly the experiences and situations of developed countries
- ▶ Asian countries may need a somewhat different process for guideline adaptation. And it is necessary to verify that the process is appropriate for context and principle

50