

Evaluating External Guidelines: AGREE II

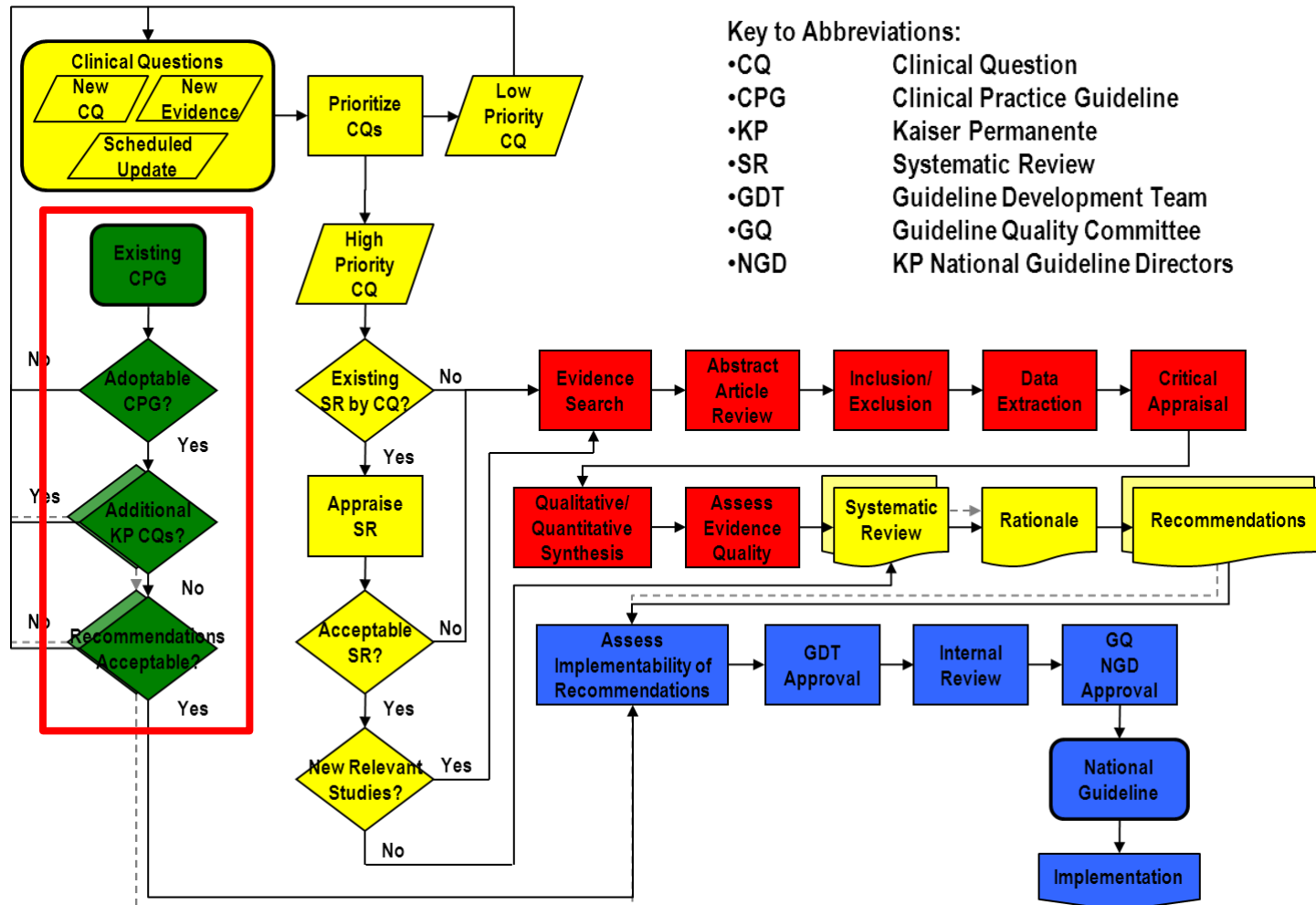
Craig Robbins, MD, MPH

care

Objectives

- Learn about using an on-line tool (AGREE II) to assess the quality of guidelines developed by other organizations

KP NGP: Development



AGREE II

- The higher the guideline quality, the more likely the benefits of following its recommendations.
- Guideline quality can be extremely variable; many fall short of basic guideline standards.
- The Appraisal of Guidelines for Research & Evaluation (AGREE) II instrument was developed to address the issue of variability in guideline quality.
- The AGREE II instrument is a tool that assesses the methodological rigor and transparency with which a guideline has been developed.

AGREE II

AGREE II provides a framework for:

- Assessing the quality of guidelines
- Developing guidelines following a methodological strategy
- Determining the “what” and “how” of information to be reported in guidelines

The AGREE II consists of 23 key items organized within 6 domains followed by 2 global rating items (“Overall Assessment”). Each domain captures a unique dimension of guideline quality.

AGREE II: Domains

1. Scope and Purpose
2. Stakeholder Involvement
3. Rigor of Development
4. Clarity of Presentation
5. Applicability
6. Editorial Independence

Plus

Overall assessment

(includes the rating of the overall quality of the guideline and whether the guideline would be recommended for use in practice)

AGREE II: Rigor of Development Domain

Relates to the process used to gather and synthesize the evidence, the methods to formulate the recommendations, and to update them.

7. Systematic methods were used to search for evidence.
8. The criteria for selecting the evidence are clearly described.
9. The strengths and limitations of the body of evidence are clearly described.
10. The methods for formulating the recommendations are clearly described.

AGREE II: Rigor of Development Domain

11. The health benefits, side effects, and risks have been considered in formulating the recommendations.
12. There is an explicit link between the recommendations and the supporting evidence.
13. The guideline has been externally reviewed by experts prior to its publication.
14. A procedure for updating the guideline is provided.

AGREE II: KP Use Example—Depression

- Last KP National Depression Guideline update
- Lead Team: started by seeking external guidelines
- Several depression guidelines identified, including:
 - National Institute for Health and Care Excellence (NICE)
- Initial assessment: AGREE II Rigor of Development questions
- Final assessment of finalist guidelines: full AGREE II



Welcome to the AGREE Enterprise website

The **NEW My AGREE PLUS** is here! Watch our brief introductory video to find out about this new feature of the website.

The Appraisal of Guidelines for Research and Evaluation (AGREE) Instrument evaluates the process of practice guideline development and the quality of reporting.

The original AGREE Instrument has been updated and methodologically refined. The AGREE II is now the new international tool for the assessment of practice guidelines. The AGREE II is both valid and reliable and comprises 23 items organized into the original 6 quality domains.

Resource Centre

Information about practice guidelines, AGREE II training tools, publications related to AGREE and AGREE Translations

[Find out more...](#)



AGREE

[Find out more.....](#)

Research Projects

Details of current and past research projects undertaken by the AGREE Enterprise and others, including the AGREE A3 Project.

[Find out more...](#)



[Download AGREE II PDF](#)

Appraise guidelines online

- Use "My AGREE PLUS" to create and manage your own collection of guideline appraisals
- First time Users can Register here
- Returning Users Log in here

Quick links

- [Introduction to the AGREE website](#)
- [AGREE II Online Training Tools](#)
- [Start appraising practice guidelines](#)

Latest update

- [10th G-I-N Conference, August 2013 San Francisco August 18th to 21st, 2013 AGREE II Training...](#)



Go

Log In

Login Here

Username:

Password:

Remember me on this computer:

Log In

[Forgotten your password?](#)

Register Here

Not registered with the AGREE website?

[Click here to register](#)

By registering for the AGREE website, you are creating your own personal account. Using this account, you will be able to:

1. Conduct practice guideline appraisals online and save them for future reference
2. Create a personal library of practice guideline appraisals
3. Share appraisals with colleagues
4. Participate in online discussions with other users and developers of AGREE



Go

Home

About

Resource Centre

Research projects

News

My AGREE PLUS

AGREE > My AGREE PLUS

My Individual Appraisals

These are appraisals of guidelines that are for your own personal use.

You currently do not have any Individual Appraisals

Start new

My Contributions to Group Appraisals

These are appraisals of guidelines that are part of a Group Appraisal.

You currently do not have any Contributions to Group Appraisals

Start new

My Co-ordinated Group Appraisals

These are appraisals of guidelines by a group of Contributors that you are Co-ordinating.

You currently do not have any Co-ordinated Group Appraisals

Start new

Welcome Craig



Craig Robbins
craig.w.robbsins@kp.org

[Update these details](#)

Help

- [Overview of the My AGREE PLUS platform](#)

For Your Information

You currently do not have any notifications



Go

[Home](#)

[About](#)

[Resource Centre](#)

[Research projects](#)

[News](#)

[My AGREE PLUS](#)

[AGREE](#) > [My AGREE PLUS](#) > [New Individual Appraisal](#)

New Individual Appraisal

Starting a new Individual Appraisal

Guideline Title

Depression

Guideline Author

NICE

Guideline Publication
Date

2010

Guideline URL

<http://www.nice.org.uk/og90>

Other URLs

[Create appraisal](#) or [Cancel](#)

Welcome Craig



Craig Robbins
craig.w.robblins@kp.org

[Update these details](#)

Help

- [Creating and Completing Individual Appraisals](#)
- [Individual Appraisal Output Options](#)

For Your Information

You currently do not have any notifications

[Back to My AGREE PLUS](#)





AGREE II: online guideline appraisal

Depression

1. Scope and Purpose	2. Stakeholder Involvement	3. Rigour of Development	4. Clarity of Presentation	5. Applicability	6. Editorial Independence	Overall Assessment																
1	2	3	4	5	6	7	8	9	10	11	12	13	14	15	16	17	18	19	20	21	22	23

7. Systematic methods were used to search for evidence.

Strongly Disagree 1 2 3 4 5 6 7 Strongly Agree

Comments:

Save and go to previous

Save and go to next

User's Manual Description:

Details of the strategy used to search for evidence should be provided including search terms used, sources consulted, and dates of the literature covered. Sources may include electronic databases (e.g. MEDLINE, EMBASE, CINAHL), databases of systematic reviews (e.g. the Cochrane Library, DARE), handsearching journals, reviewing conference proceedings, and other guidelines (e.g. the US National Guideline Clearinghouse, the German Guidelines Clearinghouse). The search strategy should be as comprehensive as possible and executed in a manner free from potential biases and sufficiently detailed to be replicated.

Where to Look:

Examine the paragraphs/chapters describing the guideline development process. In some cases the search strategies are described in separate documents or in an appendix to the guideline. Examples of commonly labelled sections or chapters in a guideline where this information can be found include: methods, literature search strategy, and appendices.

How to Rate:

Item content includes the following CRITERIA:

- named electronic database(s) or evidence source(s) where the search was performed (e.g., MEDLINE, EMBASE, PsychINFO, CINAHL)
- time periods searched (e.g., January 1, 2004 to March 31, 2008)
- search terms used (e.g., text words, indexing terms, subheadings)
- full search strategy included (e.g., possibly located in appendix)

Additional CONSIDERATIONS:

- Is the item well written? Are the descriptions clear and concise?
- Is the item content easy to find in the guideline?
- Is the search relevant and appropriate to answer the health question? (e.g., all relevant databases and, appropriate search terms used)
- Is there enough information provided for anyone to replicate the search?

Questions/Discussion