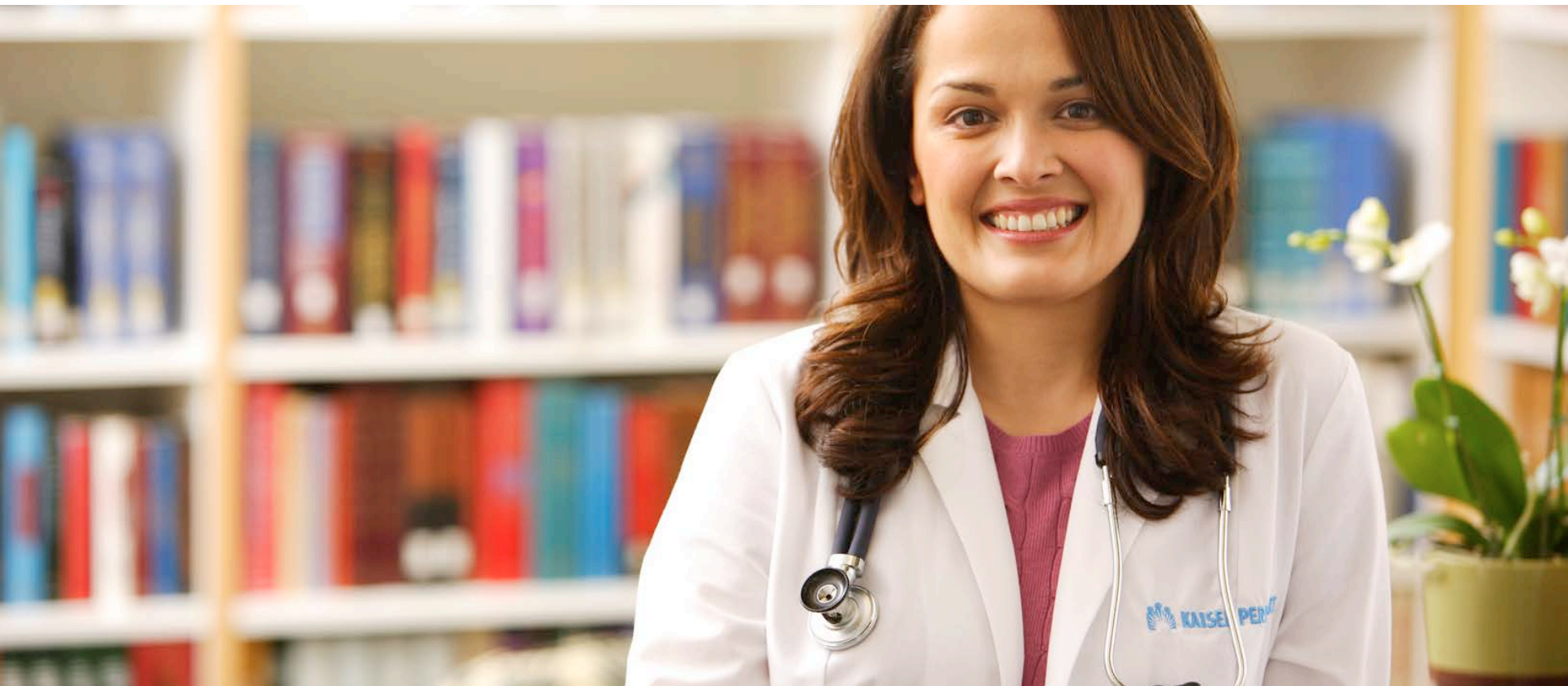


Developing and Implementing Evidence-Based Guidelines Into Practice

A G-I-N 2013 preconference course presented by the KP National Guideline Program



Introductions

- What is your name?
- What is your role?
- What IT tools do you already use to develop and implement guidelines?
- What do you want to take away from this course?

Theme for the Day

Leveraging IT tools to develop
and implement high quality
clinical practice guidelines

Morning Agenda

Theme: Leveraging IT tools in guideline development

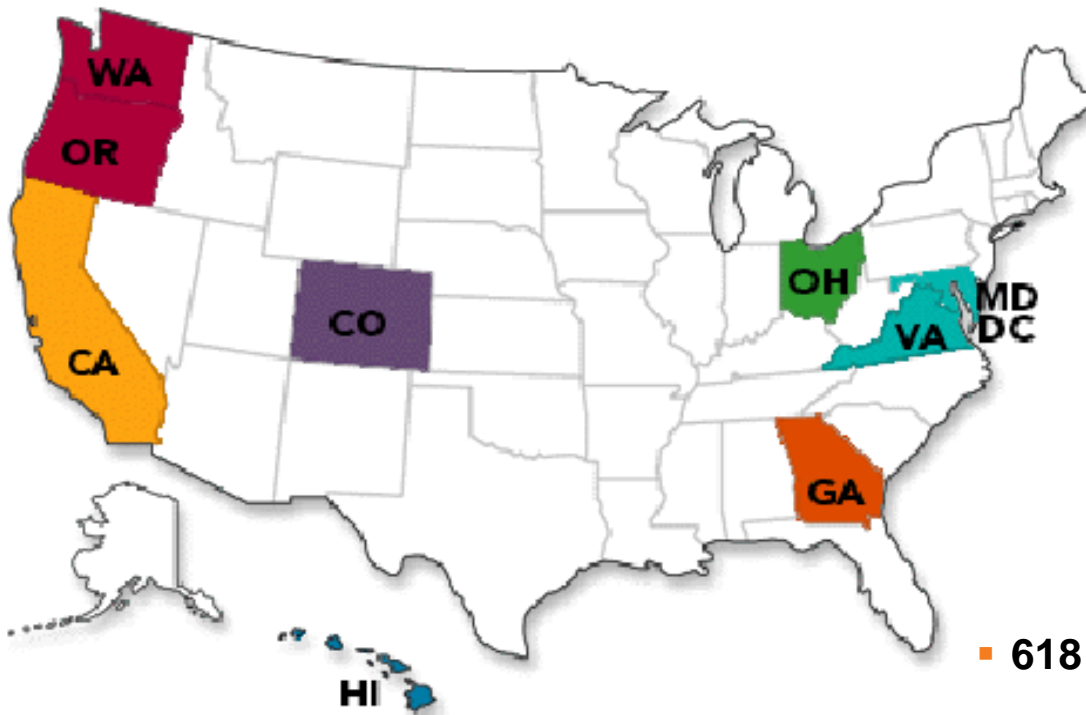
- Introduction
- Developing Answerable Clinical Questions & Searching the Medical Literature
- Evaluating & Synthesizing Evidence; Developing, Documenting & Publishing Clinical Recommendations
- Evaluating Clinical Recommendation Implementability
- Evaluating External Guidelines
- Dynamic Updating of Clinical Recommendations
- Small Group Exercise
- Large Group Report Out/Morning Wrap-Up

Afternoon Agenda

Theme: Leveraging IT tools in guideline implementation

- Guideline Implementation: Literature Review
- IT Tools to Support Implementation
- KP Regional Implementation of Guidelines
 - Example 1: KP Southern California
 - Example 2: KP Northern California
- Small Group Exercise
- Large Group Report Out/Afternoon Wrap-up

About Kaiser Permanente



- One of the USA's largest nonprofit health plans
- Integrated health care delivery system
- 9.1 million members
 - 17,000+ physicians
 - 49,000+ nurses
 - 175,000+ employees
- Serving 9 states and the District of Columbia
 - 37 hospitals
- 618 medical offices/ outpatient facilities
 - \$50.6 billion operating revenue*
- Scope includes ambulatory, inpatient, ACS, behavioral health, SNF, home health, hospice, pharmacy, imaging, laboratory, optical, dental, and insurance

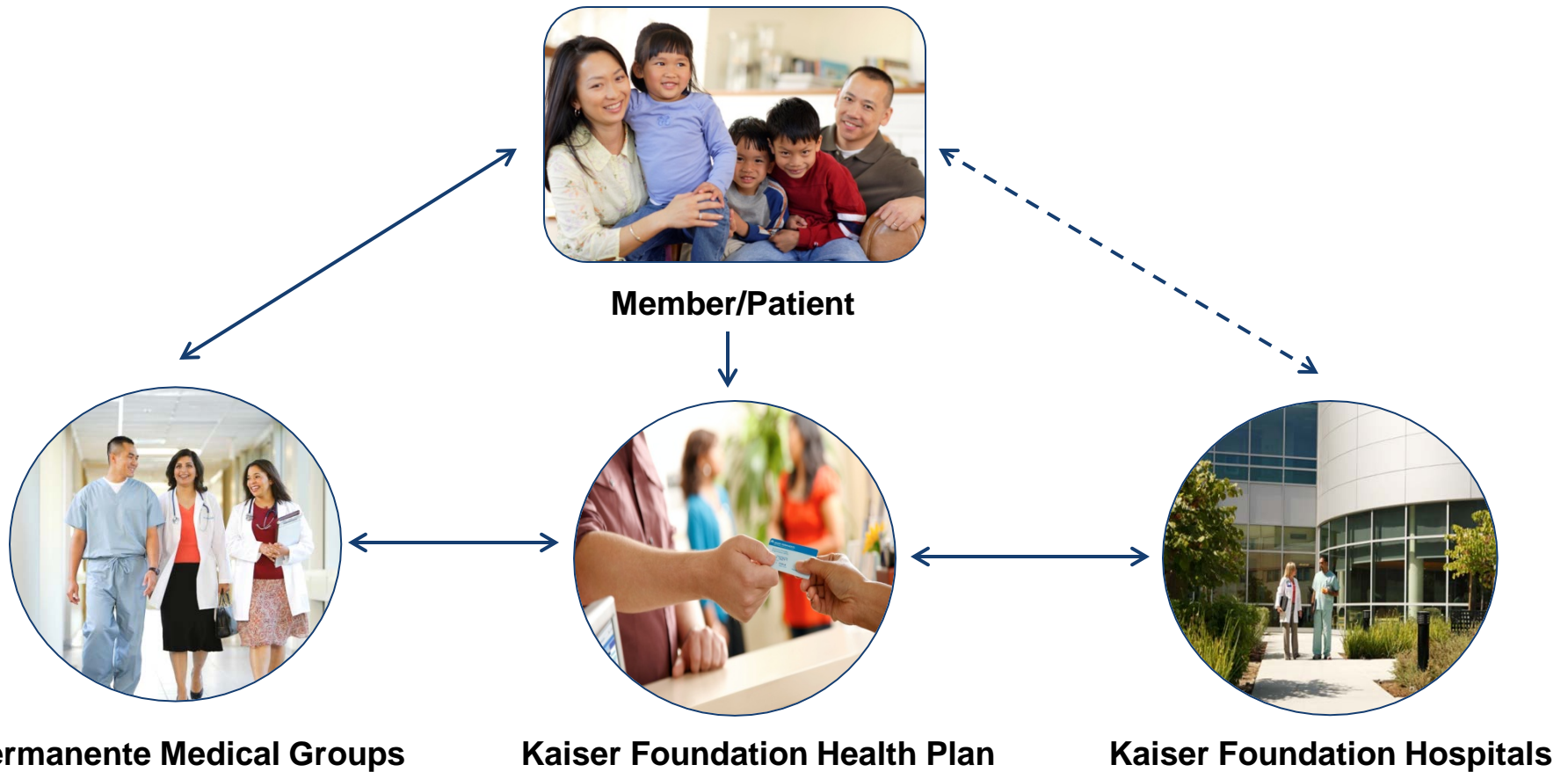
*Source: 2012 Kaiser Permanente Annual Report

Our Mission



To provide high-quality, affordable health care services and to improve the health of our members and the communities we serve.

KP Integrated Care Delivery System



KP National Guideline Program (NGP)

- Provides evidence-based clinical recommendations on core clinical topics to support care delivery and optimize the health of KP members.
- Supports KP broadly in its quest to provide the highest quality of care through the consistent delivery of effective clinical practices.
- Implemented guideline recommendations help to reduce unwarranted variation in care and improve clinical outcomes.

KP National Evidence Network

- 15 KP National Evidence-Based Guidelines
 - Supported by full systematic reviews
- 3.5 staff FTEs dedicated to KP NGP work
 - 1 Principal Consultant, 2 Evidence Analysts, 2 Project Managers
- 1.5 physician FTEs dedicated to KP NGP work
 - 7 Physician EBM Methodologists
- 15 Guideline Development Teams (GDTs)
 - Comprised of 15-20 people representing the various KP regions

KP NGP Portfolio

Drug Formulary | KP Phone Book | Ask a Librarian | Help | Feedback | Change Region

KAISER PERMANENTE. CLINICAL LIBRARY | Colorado

national guidelines GO

HOME ADULT CARE PEDIATRIC CARE PATIENT CARE RESOURCES PATIENT DATA SITES REFERENCE SHELF CONTINUING EDUCATION MANAGEMENT RESOURCES

Results 1-20 of about 42

DOCUMENT TYPE

- Guidelines (38)
- Patient Care Resources (21)

REGION

CO All Regions

SEARCH FOR "NATIONAL GUIDELINES" IN:

- Micromedex
- Dynamed
- StatRef
- MD Consult
- Natural Standards
- PubMed
- OVID
- Google Scholar
- 360 Search **Trial**

Search across: Title/Keywords Full Text

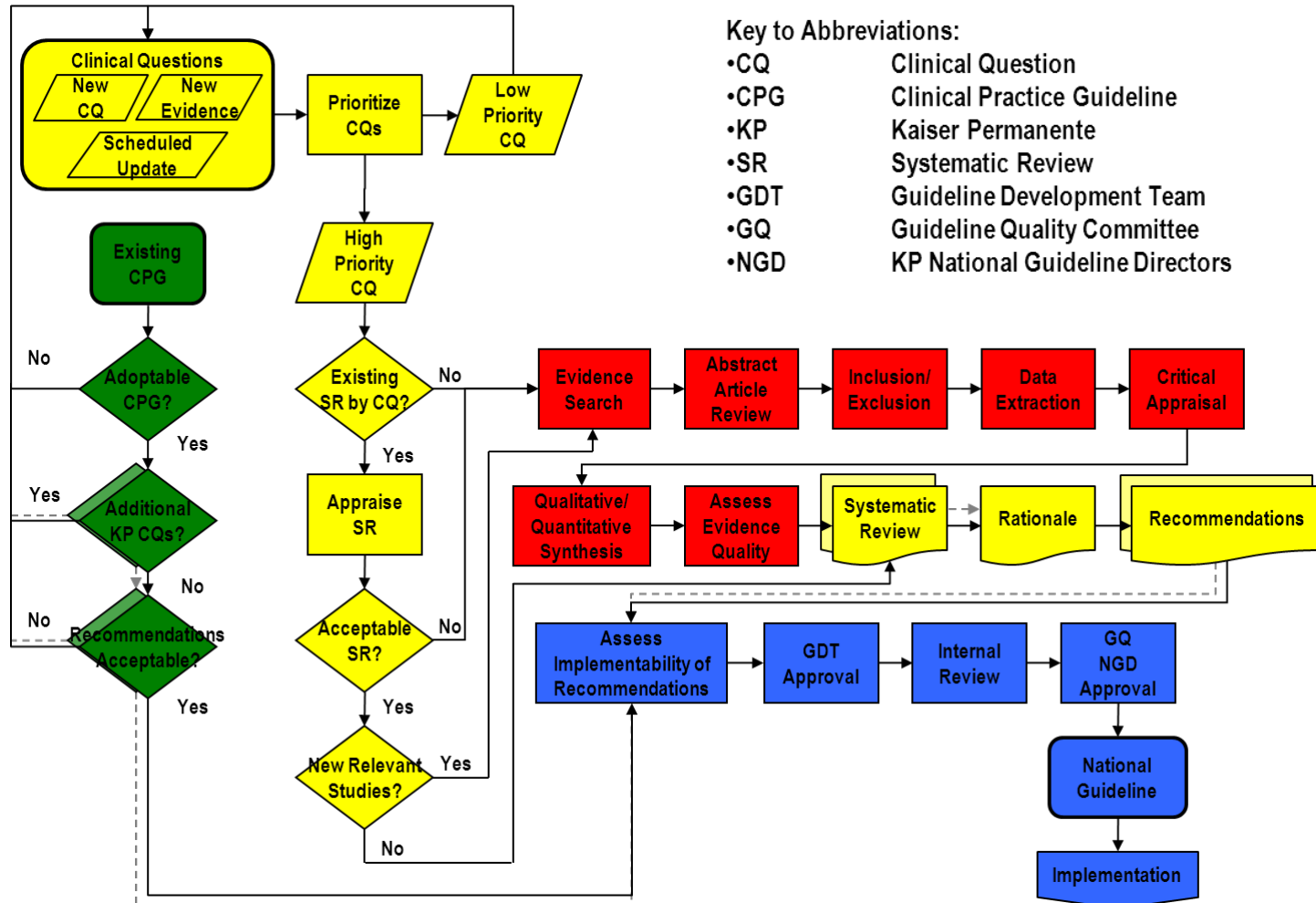
KP National Guidelines: Evidence-Based Methodology

- [Asthma - Adult Guidelines](#)
- [Asthma - Child/Adolescent Guidelines](#)
- [Attention Deficit/Hyperactivity Disorder \(ADHD\) Guideline](#)
- [Cancer: Breast Cancer Screening Guideline](#)
- [Cervical Cancer Screening Guideline](#)
- [Colorectal Cancer Screening Guideline](#)
- [CVD Risk Reduction Guideline](#)
 - [Coronary Artery Disease \(CAD\)](#)
 - [Diabetes](#)
 - [Dyslipidemia](#)
 - [Hypertension](#)
- [Depression - Adult Guidelines](#)
- [Heart Failure Guideline](#)
- [HIV-STI Screening & Prevention Guideline](#)
- [Osteoporosis Guideline](#)
- [Prostate Screening Guideline](#)

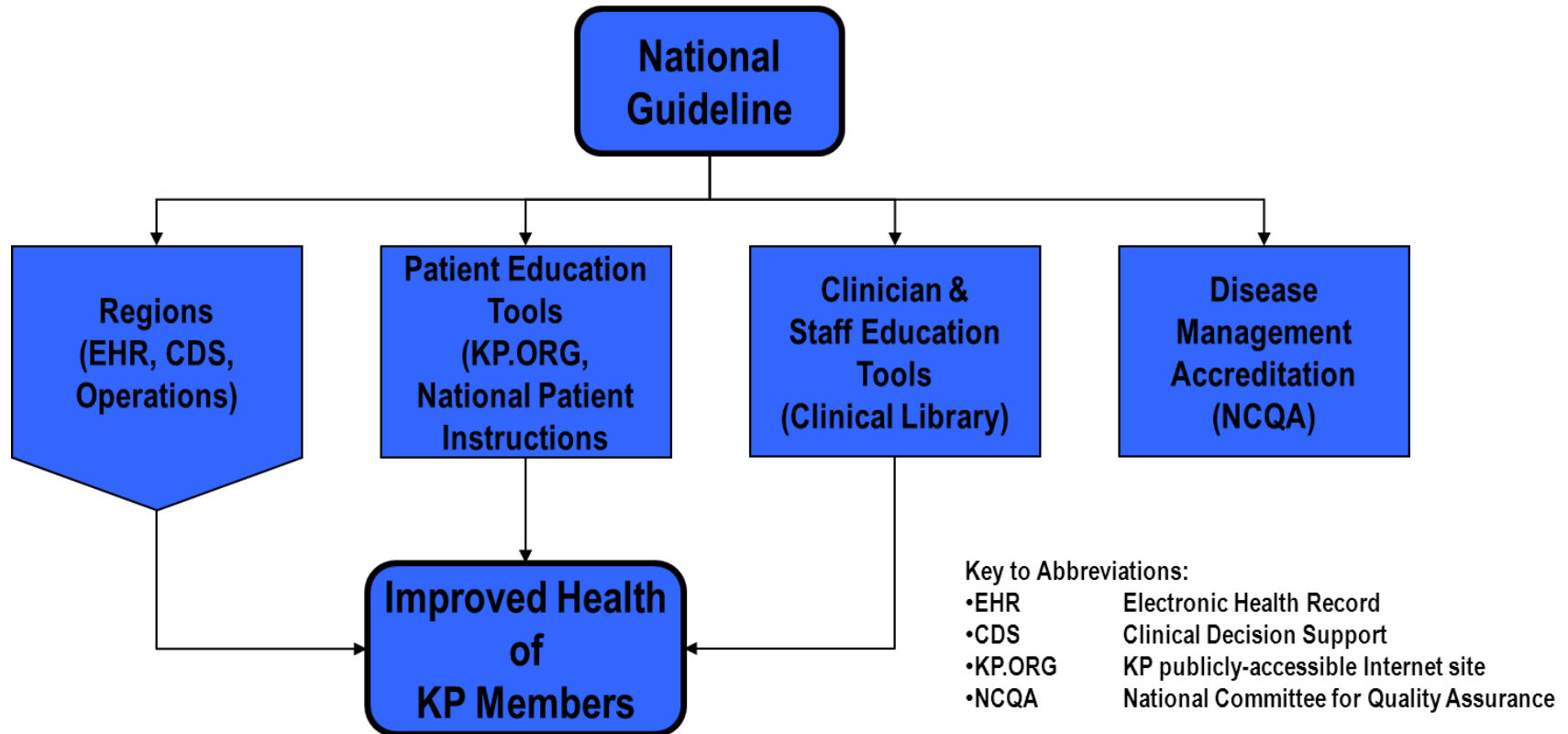
KP NGP Topic Prioritization Considerations

- Quality of care concerns
 - Unwarranted variation in clinical/operational practice
 - Multiple treatment options
 - Support for regional quality improvement initiatives
 - Professional/department chiefs' request
- High cost or resource utilization
- High prevalence of condition or risk factor
- Regulatory/accreditation requirements and metrics
- Strategic priorities
- Public interests
- Payer/Employer Group interests

KP NGP: Development



KP NGP: Implementation





Challenges in SR & CPG Development

- Lack of transparency
 - Evidence basis not always explicitly linked to recommendations
 - Difficult to assess rigor of development
- Resource intensity
 - Balancing infinite need vs. finite resources
 - Balancing efficiency vs. rigor
 - Developing expertise and infrastructure requires significant investment
 - Updating issues: Static intervals? Dynamic updates?

Might leveraging IT help to address these challenges?

SR & CPG IT Platform: Desired Outcomes

- Improve SR & CPG development processes
 - Efficiency
 - Transparency
 - Rigor
- Devote more energy and resources to CPG implementation
 - Embedding guideline based practices into standard workflows
 - Building clinical decision support into the electronic medical record
 - Collaborating with performance measure developers
- Collaborate with other SR & CPG developers
 - Sharing study data extractions? Globalize the evidence?

Questions/Discussion